



Circus Road West, London SW11

Guide price £1,125,000 Leasehold





Description

Located on the 8th floor, this very well proportioned apartment benefits from Battersea Power Station and partial river views, offering a spacious open plan kitchen, dining space and reception leading to the winter garden, 2 double bedrooms - one of which benefits from an en-suite - both with access to a second separate winter garden and there is a further family bathroom.

Resident facilities include a shuttle bus service with drops-offs at Sloane Square, Victoria and Vauxhall tube stations, 24 hr. concierge, on-site gym, swimming pool and spa, cinema, games room, meeting room and all day restaurant.

Located by the river, this luxury apartment is ideally situated for Chelsea, Battersea Park and the tube and rail stations are within 0.8 miles reach.

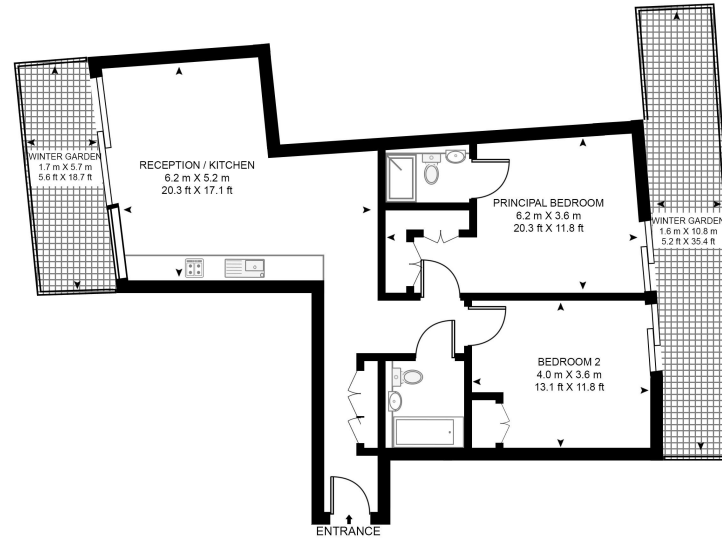


- Battersea Power Station
- 2 Double Bedrooms
- 2 Bathrooms
- 2 Winter Gardens
- 8th Floor
- Luxury Facilities - Gym, Swimming Pool, Cinema, Games Room, Residents Lounge
- 24 hr. Concierge
- 0.8 Miles to Queenstown Road Station
- 0.7 Miles to Battersea Park Station
- EPC: C

Floorplan

931 sq ft | 87 sq m

FLADGATE HOUSE, BATTERSEA POWER STATION
APPROXIMATE GROSS INTERNAL FLOOR AREA 931 SQ.FT (86.5 SQ.M)
(WINTER GARDEN 266 SQ.FT 24.7 SQ.M)



EIGHTH FLOOR

HDVA

This floor plan has been defined by the RICS Code of Measurement. This floor plan and all others are for approximate representative purposes only and upon usage is agreed to as such by the client.
WWW: hdvirtualart.com | TEL: 0203.974.1567 | EMAIL: info@hdvirtualart.com

Nine Elms
4 Riverlight Quay,
London SW11 8DG
020 3147 1333
nineelms@eu.jll.com

Urban living, your way.

jll.co.uk/residential

© 2019 Jones Lang LaSalle IP, Inc. All rights reserved. All information contained herein is from sources deemed reliable; however, no representation or warranty is made to the accuracy thereof.

