



Aslett Street, London SW18

Guide price £530,000 Freehold







Description

A 2 bedroom, first floor, Victorian maisonette ideally located in a quite residential street off of Garratt Lane.

This property owns the freehold for the building. Arranged over two floors this family home comprising bright and spacious reception room with double glazed bay window, kitchen and bathroom to the rear, double bedroom and an additional double bedroom on the upper floor with ample storage space.

The property offers on street parking with the required parking permit.

Aslett Street is part of a grid of quiet residential roads of similar Victorian purpose built apartments and maisonettes, which are consistently sought after being equidistant from Earlsfield and Wandsworth Town. This location is very well served by excellent transport links, restaurants, bars, leisure and shopping facilities all within close proximity of the property.

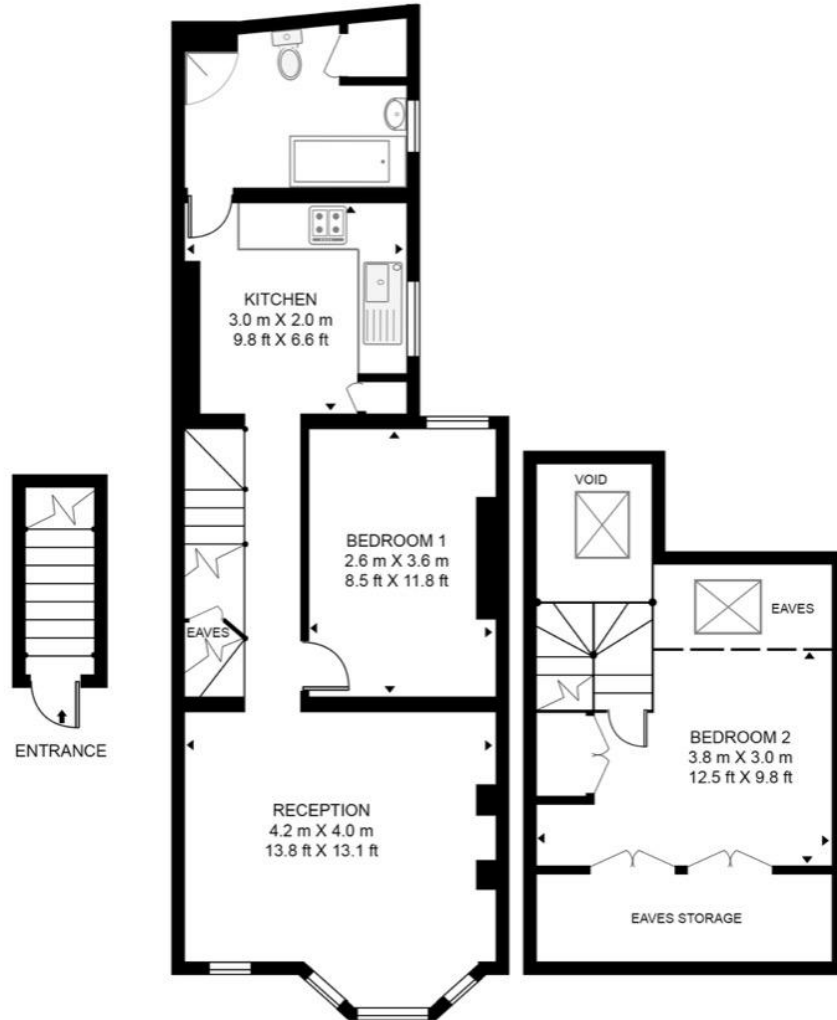
- Victorian Maisonette
- Freehold
- 2 Bedrooms
- 1 Bathroom
- Separate Reception
- Equidistant from Earlsfield and Wandsworth
- 0.3 Miles to King George's Park
- 0.6 Miles to Earlsfield Station
- EPC D

Floorplan

775 sq ft | 72 sq m

ASLETT STREET

APPROXIMATE GROSS INTERNAL FLOOR AREA 775 SQ.FT (72 SQ.M)



GROUND FLOOR

FIRST FLOOR

SECOND FLOOR

HDVA

This floor plan has been defined by the RICS Code of Measurement. This floor plan and all others are for approximate representative purposes only and upon usage is agreed to as such by the client.

WWW: hdvirtualart.com | TEL: 0203.974.1567 | EMAIL: info@hdvirtualart.com

Nine Elms
4 Riverlight Quay,
London SW11 8DG
020 3147 1333
nineelms@eu.jll.com

Urban living, your way.

jll.co.uk/residential

© 2019 Jones Lang LaSalle IP, Inc. All rights reserved. All information contained herein is from sources deemed reliable; however, no representation or warranty is made to the accuracy thereof.

