



Chivers Passage, London SW18

Price £410 per week - Unfurnished





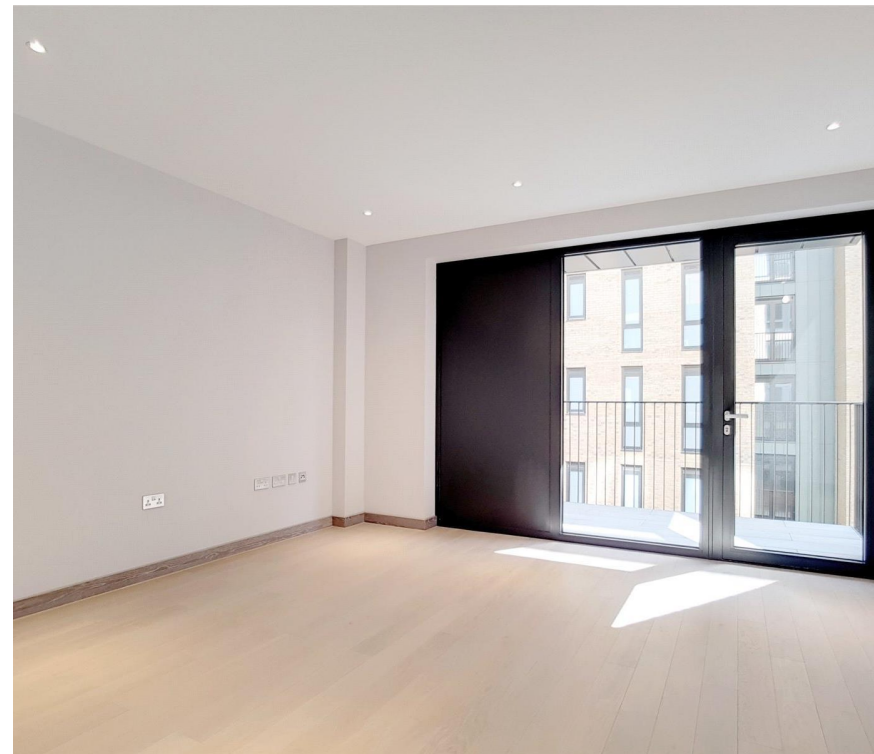
Description

This beautifully appointed apartment is bright, modern and private. Comprising of open plan kitchen reception room with wooden floors and floor to ceiling windows, double bedroom with built in wardrobes, luxury bathroom and hallway storage.

Located approximately 5 minutes from Wandsworth Town station and 12 minutes from East Putney tube station.

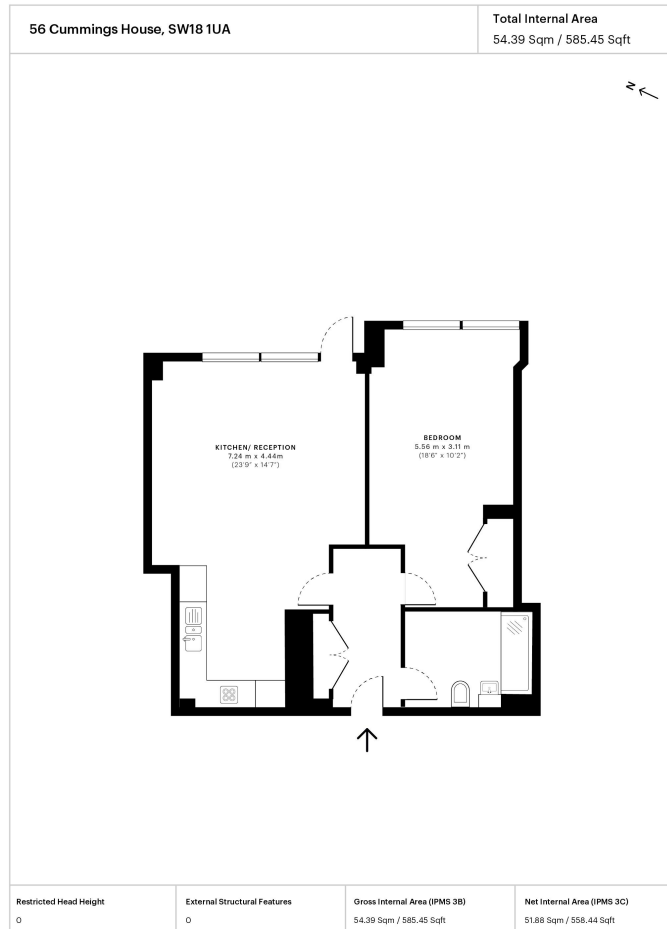
Nearby Old York Road offers boutiques, cafes, galleries and restaurants, along with Southside shopping centre with its various shops, supermarket and entertainment. Wandsworth Park and riverside are a short stroll away.

- - 1 Bedroom
- - 1 Bathroom
- - Wandsworth Town
- - Concierge
- - Modern Development
- - Unfurnished
- - 585 sq ft (54 sq m)
- - EPC: B



Floorplan

585 sq ft | 54 sq m



This floor plan was captured for JLL Nine Elms on 04/05/2018 using 75,000,000 laser scan points, accurate to +/- 3cm and produced in accordance with the Royal Institute of Chartered Surveyors Property Measurement standards, applying the International Property Measurement Standard (IPMS). Total Internal Area is the gross internal area measured from the internal faces of external walls using IPMS Residential 3B including internal walls / obstructions, external structural features such as balconies and additionally includes stairwells above the lowest level of the dwelling. Net Internal Area is measured using IPMS Residential 3C excluding internal walls/obstructions and stairwells above the lowest floor. If you intend to rely on any measurement in a transaction you should perform your own checks.



Nine Elms
4 Riverlight Quay,
London SW11 8DG
+4420 3147 1333
nineelms@eu.jll.com

Urban living, your way.

jll.co.uk/residential

© 2019 Jones Lang LaSalle IP, Inc. All rights reserved. All information contained herein is from sources deemed reliable; however, no representation or warranty is made to the accuracy thereof.

