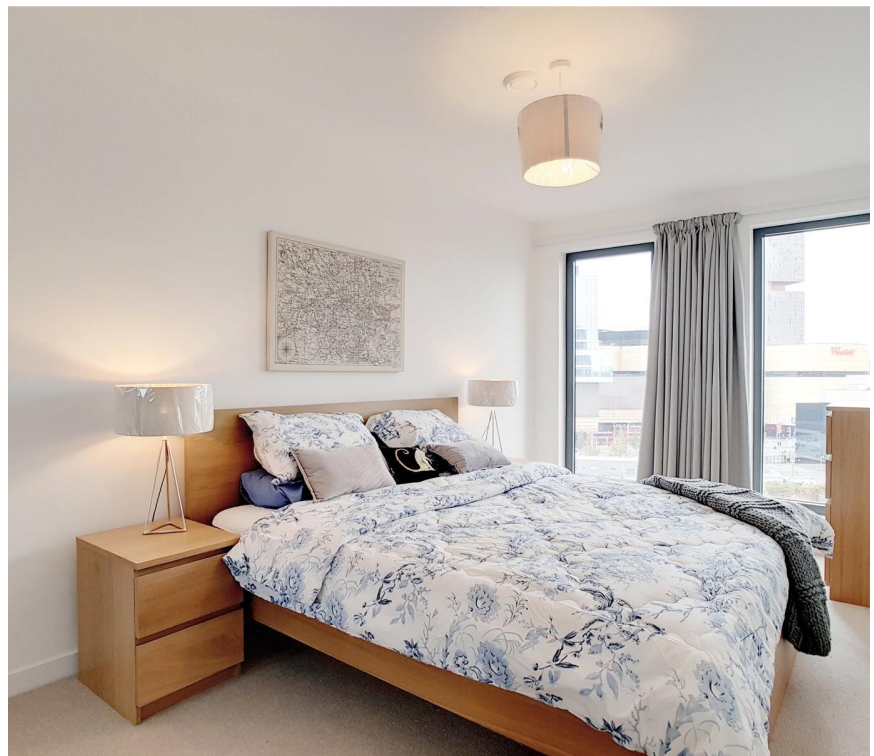
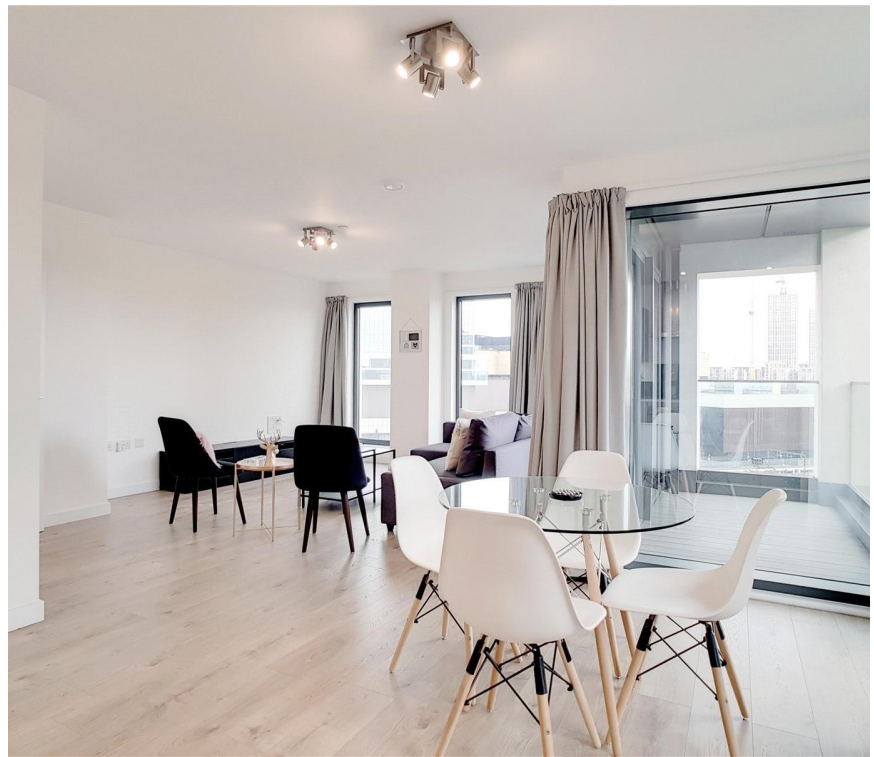




## Great Eastern Road, London E15

Guide price £500,000 Leasehold





# Description

This modern one bedroom apartment located on the seventh floor in Legacy Tower (Stratford Central) is just a short walk from Stratford station and close to the amenities of Westfield Shopping centre.

A striking 31-storey tower set in the heart of Stratford overlooking the Queen Elizabeth Olympic Park and Westfield Stratford City. You could not be closer to the heart of this incredible regeneration story, with a range of suites, one, two and three bedroom apartments and penthouses, urban living has never been so attractive. With most apartments offering private outside space, each has the ability to showcase their own unique vista on the capital.

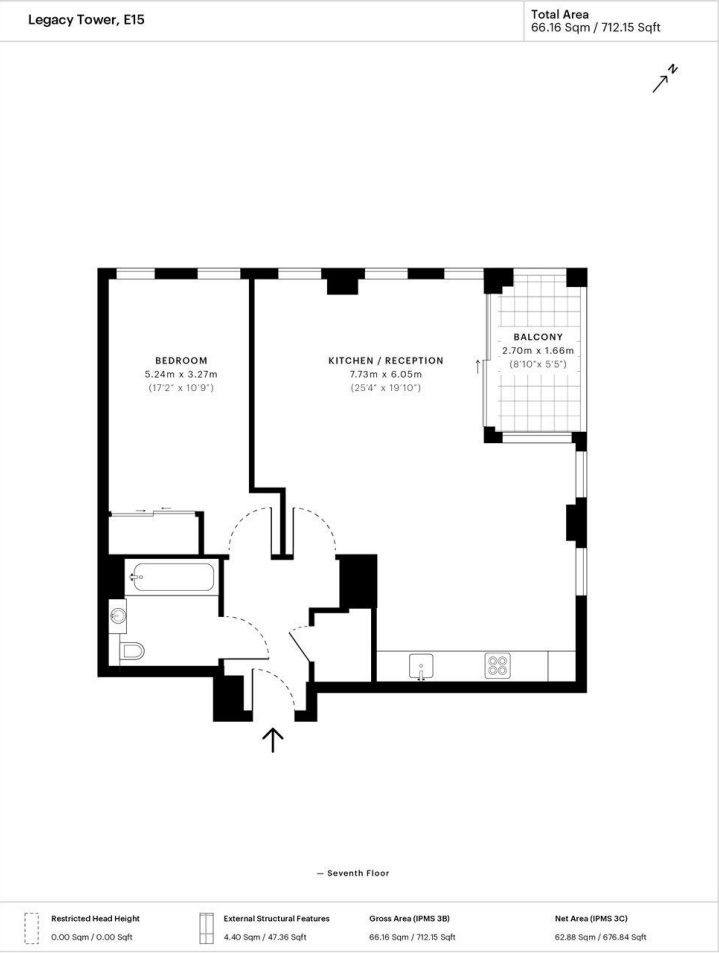
Accommodation extends to 712.15 Sqft (66.16 Sq m) and consists of an open plan kitchen/living room with dining area leading onto the large balcony, double bedroom and bathroom.

- 1 Bedroom
- 1 Bathroom
- Balcony
- Residential Gym
- 24 Hour Concierge
- 0.1 mile from Stratford Station
- Leasehold
- Approx 712.15 sq ft (66.16 sq m)
- EPC: B



# Floorplan

712 sq ft | 66 sq m



Spec floor plan captured for JLL Stratford on 04/09/2018 using 22,409,832 laser scan points, accurate to +/- 3cm. Produced in accordance with Royal Institution of Chartered Surveyors Property Measurement Standards, incorporating International Property Measurement Standard (IPMS). If you intend to rely on any measurement in a transaction you should perform your own checks. Plot/Caroline illustrative only and excluded from all area calculations. SpecID: 5b8ceec5d772c30c73f6e0b8

**Restricted Head Height** = Limited use area under 1.5m. **External Structural Features** = Balconies, terraces or verandas or similar. **IPMS 3B** = gross internal area measured from the internal face of external walls, including walls/obstructions and External Structural Features, excluding stairwell area above/below the ground floor. **IPMS 3C** = net area of IPMS 3B excluding internal walls/obstructions and stairwell area above/below the ground floor. **Total Area** = IPMS 3B gross area + stairwell area above/below ground floor of 0.00 Sqm / 0.00 Sqft.



Stratford  
5 Station Street,  
London E15 1DA  
020 3147 1500

*Urban living, your way.*

[jll.co.uk/residential](http://jll.co.uk/residential)

© 2019 Jones Lang LaSalle IP, Inc. All rights reserved. All information contained herein is from sources deemed reliable; however, no representation or warranty is made to the accuracy thereof.

