



Station Street, London E15

Guide price £600,000 Leasehold





Description

This, 19th floor, 837 Sqft, two bedroom apartment with far reaching views of Canary Wharf, the City and the Olympic park is set within the desirable Unex Tower.

Unex Tower is located directly opposite Stratford underground station for an easy commute to Canary Wharf and the City.

Featuring the highest quality and designer brand names throughout, each apartment is designed and built to the finest standard. High specification kitchens include handle-less fitted units, engineered stone worktops, glass splash backs and fully integrated appliances. Bathrooms and en Suite shower rooms offer bespoke cabinetry and ceramic tiling. Fitted wardrobes to main bedrooms and under floor heating throughout. The development features a private roof terrace with spectacular 360° vistas of London, 24 hour concierge service and secured bicycle storage.



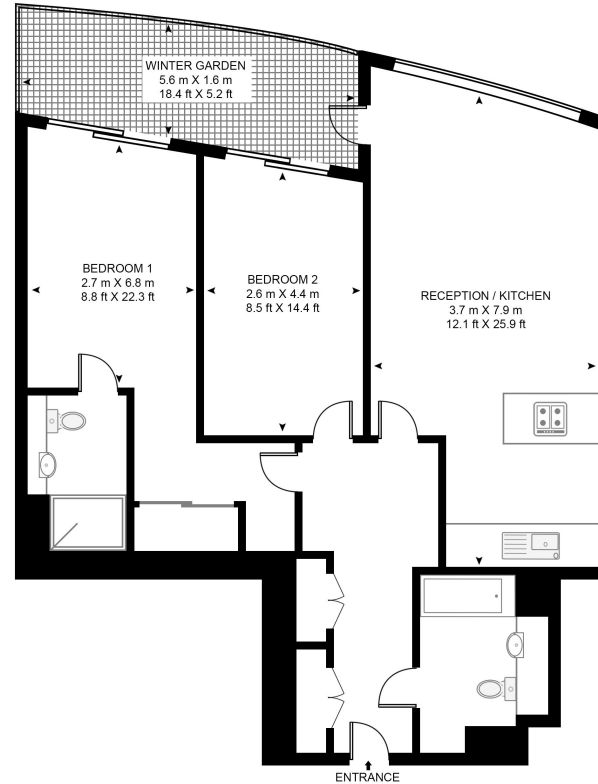
- Two Bedrooms
- Two Bathrooms
- Winter garden
- Stunning views
- Approx. 837 sq ft (77.8 sq m)
- High specification finishes
- Leasehold
- EPC: B

Floorplan

837 sq ft | 78 sq m

UNEX TOWER

APPROXIMATE GROSS INTERNAL FLOOR AREA 837 SQ.FT (77.8 SQ.M)



NINETEENTH FLOOR

HDVA

This floor plan has been defined by the RICS Code of Measurement. This floor plan and all others are for approximate representative purposes only and upon usage is agreed to as such by the client.

WWW: hdvirtualart.com | TEL: 0203.974.1567 | EMAIL: info@hdvirtualart.com

Stratford
5 Station Street,
London E15 1DA
020 3147 1500
stratford@eu.jll.com

Urban living, your way.

jll.co.uk/residential

© 2019 Jones Lang LaSalle IP, Inc. All rights reserved. All information contained herein is from sources deemed reliable; however, no representation or warranty is made to the accuracy thereof.

