



Great Eastern Road, London E15

Guide price £400,000 Leasehold





Description

A studio apartment in Stratosphere Tower, a spectacular 36-storey tower located in the heart of Stratford offers a unique space offering residents a private gymnasium, concierge, Wi-Fi lounge and roof-top terrace.

Property has underfloor heating. Handleless fitted units from designer Urban Myth, stone worktops, Smeg appliances. Kitchen, living room & hallway in quality woodstrip laminate, bedrooms carpeted in a neutral colour tone. Décor with smooth finish to all walls & ceilings, painted in white emulsion and White satinwood finish. Bath with thermostatic rain shower mixer & glazed screen, contemporary ceramic tiling, large vanity mirror, bespoke cabinetry with built in storage & low voltage socket and two towel rails.

Located a two minute walk to London's best connected transport hubs for Central, Jubilee, DLR, Overground and TFL rail lines.



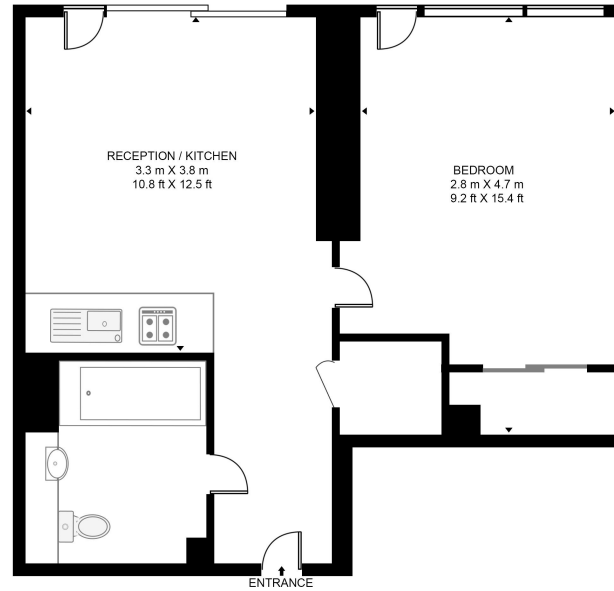
- Studio Apartment
- Separate living and kitchen area
- Residential Gym
- Concierge
- Access to Roof-Top Terrace
- WiFi Lounge
- 0.2 miles from Stratford Underground Station
- Approx 376 sq ft (34.9 sq m)
- EPC: B
- Leasehold

Floorplan

376 sq ft | 35 sq m

STRATOSPHERE TOWER

APPROXIMATE GROSS INTERNAL FLOOR AREA 376 SQ.FT (34.9 SQ.M)



SIXTH FLOOR

HDVA

This floor plan has been defined by the RICS Code of Measurement. This floor plan and all others are for approximate representative purposes only and upon usage is agreed to as such by the client.
WWW: hdvirtualart.com | TEL: 0203.974.1567 | EMAIL: info@hdvirtualart.com

Stratford
5 Station Street,
London E15 1DA
020 3147 1500
stratford@eu.jll.com

Urban living, your way.

jll.co.uk/residential

© 2019 Jones Lang LaSalle IP, Inc. All rights reserved. All information contained herein is from sources deemed reliable; however, no representation or warranty is made to the accuracy thereof.

