



## Station Street, London E15

Guide price £749,995 Leasehold





# Description

A beautiful apartment in Unex Tower development. This three bedroom apartment benefits from a sizeable winter garden with views towards the Olympic Park and Westfield Stratford City.

This highly sought after scheme is located in London's major business centre & within easy reach of City Airport, Canary Wharf, The City of London, Europe's biggest shopping centre and is approximately 0.1 mile from Stratford station.

Unex Tower boasts a 24 hour concierge, secured bicycle storage and a private residents' roof terrace.

- - 3 Bedrooms
- - 2 Bathrooms
- - Wintergarden
- - Communal roof-top-terrace
- - Approx. 1,065 sq ft (98.9 sq m)
- - 0.2 mile from Stratford station
- - Concierge
- - EPC: B



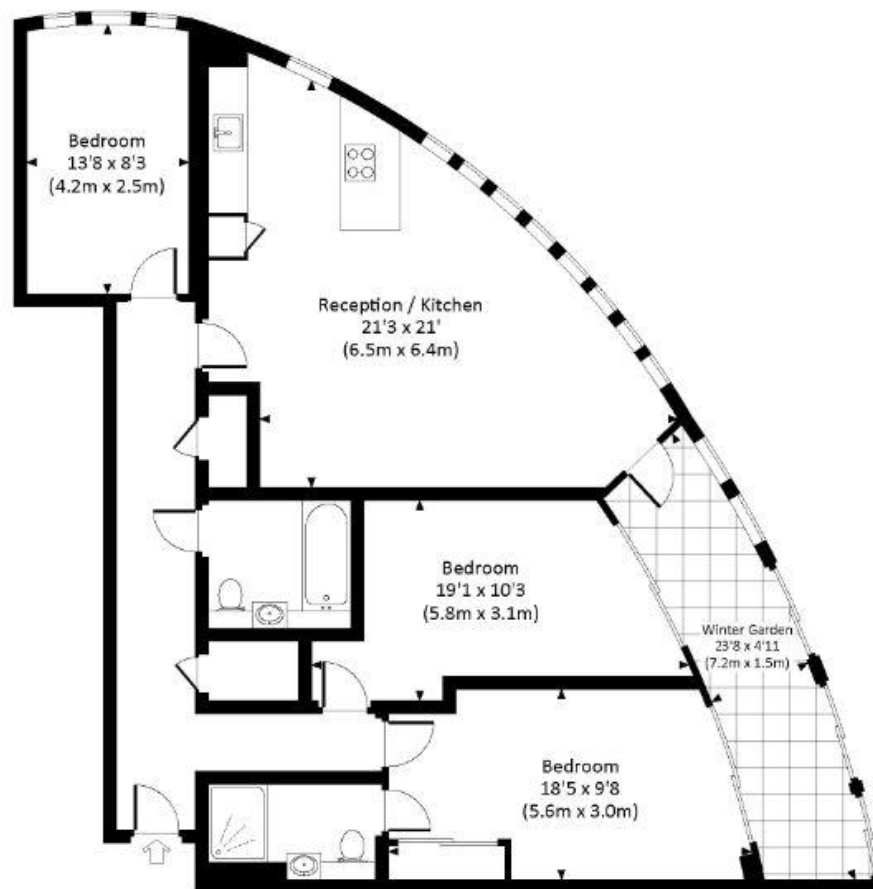
# Floorplan

1,236 sq ft | 115 sq m

## UNEX TOWER, STATION ROAD, E15

Approx. gross internal area 1104 Sq Ft. / 102.6 Sq M.

Approx. gross internal area 1236 Sq Ft. / 114.8 Sq M. Inc. Winter Garden



Stratford  
5 Station Street,  
London E15 1DA  
+4420 3147 1500  
stratford@eu.jll.com

*Urban living, your way.*

[jll.co.uk/residential](http://jll.co.uk/residential)

© 2019 Jones Lang LaSalle IP, Inc. All rights reserved. All information contained herein is from sources deemed reliable; however, no representation or warranty is made to the accuracy thereof.

