

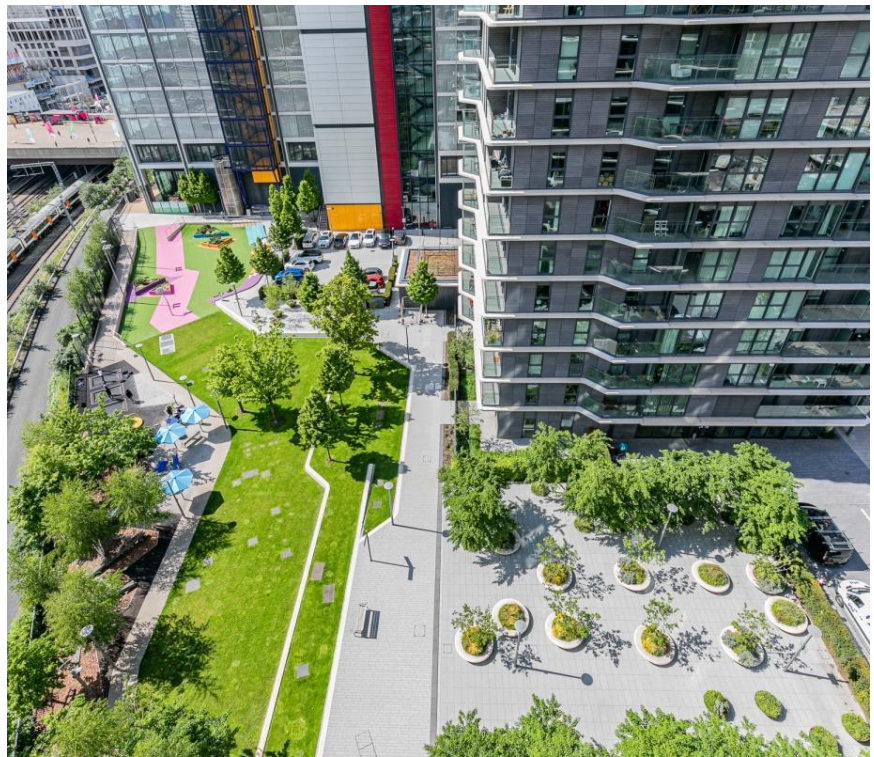


# Glasshouse Gardens, London E20

Guide price £700,000 Leasehold









# Description

A fantastic opportunity to purchase this spacious apartment in Stratford, London. The apartments have truly been designed from the inside-out, to ensure the best spaces are provided.

Situated on the tenth floor and comprising of approximately 800 square feet, the property boasts an open kitchen/living area with integrated appliances, floor-to-ceiling-windows allowing plenty of light, private balcony overlooking the iconic Olympic legacy landmarks, two bedrooms with fitted wardrobes with two bathrooms (including an en suite).

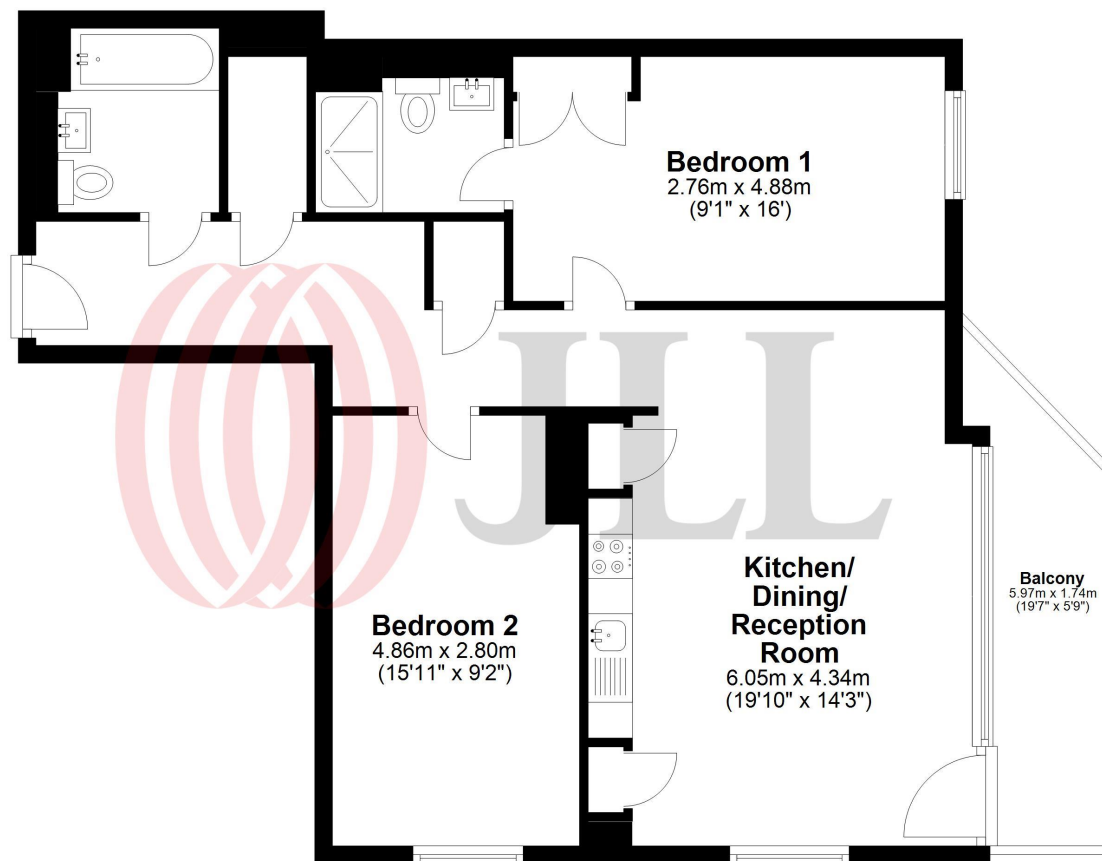
The development is directly opposite the amenities of Westfield Shopping Centre and a short walk from Stratford Underground Station. Residents further benefit from a concierge service, secure intercom entry, lift access and close to local amenities.

- Concierge service
- Lift access
- Private balcony
- Communal landscaped gardens
- High speed broadband
- Secured allocating parking space
- Close to Stratford Underground Station
- Tenure: Leasehold



## Tenth Floor

Approx. 74.6 sq. metres (802.8 sq. feet)



Total area: approx. 74.6 sq. metres (802.8 sq. feet)

Floor Plan measurements are approximate and are for illustrative purposes only. While we do not doubt the floor plans accuracy, we make no guarantee, warranty or representation as to the accuracy and completeness of the floor plan.  
Plan produced using PlanUp.