



Liberty Bridge Road, London E15

Guide price £395,000 Leasehold





Description

Spacious one bedroom apartment located on the edge of the Olympic Park.

The apartment is light and spacious offering a large open plan living space, modern kitchen with integrated appliances and space for dining. Master bedroom with built in wardrobe. Family bathroom with bath, shower and storage.

Prairie Building is located within walking distance of Stratford Station, providing excellent transport links into The City, Canary Wharf, and West End. Westfield Stratford City shopping centre is also less than 0.5 miles away offering access to excess of 250 shops, and over 60 bars and restaurants.

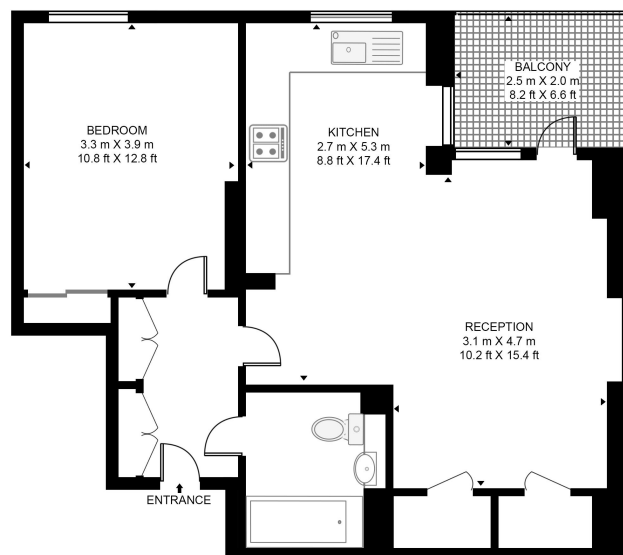
- - 1 Bedroom
- - 1 Bathroom
- - 1st Floor apartment
- - Balcony
- - Approx. 584 sq ft (54.3 sq m)
- - 0.5 miles from Westfields
- - 0.5 miles from Stratford station
- - Modern development
- - Leasehold - (120 years)
- - EPC: B



Floorplan

584 sq ft | 54 sq m

PRAIRIE BUILDING, 45 LIBERTY BRIDGE ROAD
APPROXIMATE GROSS INTERNAL FLOOR AREA 584 SQ.FT (54.3 SQ.M)



FIRST FLOOR

HDVA

This floor plan has been defined by the RICS Code of Measurement. This floor plan and all others are for approximate representative purposes only and upon usage is agreed to as such by the client.
WWW: hdvirtualart.com | TEL: 0203.974.1567 | EMAIL: info@hdvirtualart.com

Stratford
5 Station Street,
London E15 1DA
+4420 3147 1500
stratford@eu.jll.com

Urban living, your way.

jll.co.uk/residential

© 2019 Jones Lang LaSalle IP, Inc. All rights reserved. All information contained herein is from sources deemed reliable; however, no representation or warranty is made to the accuracy thereof.

