



# High Street, London E15

Guide price £695,000 Leasehold







## Description

Opportunity to purchase within one of Stratford's popular developments, River Heights E15

Situated on the 21st floor and comprising of approximately 1,111 square feet, the property boasts an open-plan kitchen/living area with integrated appliances, three private balconies, three good sized bedrooms, master with ensuite and access onto its own private balcony and a separate family bathroom.

The development is located just a short walk from Stratford Underground Station and Stratford International DLR Station.

Residents further benefit from a concierge service, private underground parking, access to residential gymnasium and Roof garden, and close to local amenities and London's Westfield center

Early viewings are highly recommended.

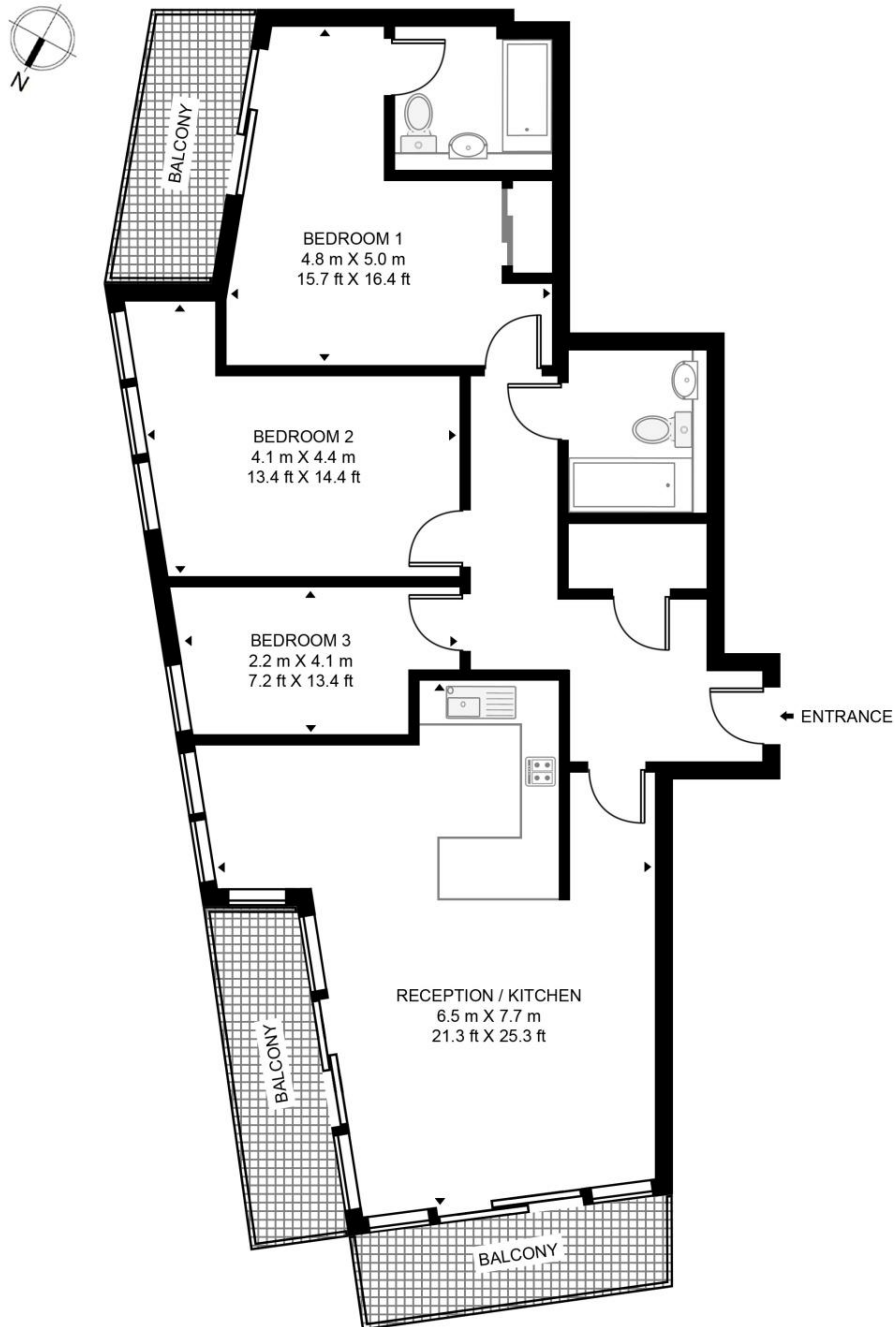
- - 3 Bedrooms
- - 2 Bathrooms
- - 3 Balconies
- - 21st Floor modern apartment
- - Stunning views across London
- - Approx. 1,111 sq ft (103.2 sq m)
- - Allocated parking space
- - Short walk to Stratford underground station
- - Concierge services
- - EPC: B

# Floorplan

1,111 sq ft | 103 sq m

## RIVER HEIGHTS

APPROXIMATE GROSS INTERNAL FLOOR AREA 1111 SQ.FT (103.2 SQ.M)



TWENTY FIRST FLOOR

**HDVA**

This floor plan has been defined by the RICS Code of Measurement. This floor plan and all others are for approximate representative purposes only and upon usage is agreed to as such by the client.

WWW: [hdvirtualart.com](http://hdvirtualart.com) | TEL: 0203.974.1567 | EMAIL: [info@hdvirtualart.com](mailto:info@hdvirtualart.com)

Stratford  
5 Station Street,  
London E15 1DA  
+4420 3147 1500  
[stratford@eu.jll.com](mailto:stratford@eu.jll.com)

*Urban living, your way.*

[jll.co.uk/residential](http://jll.co.uk/residential)

© 2019 Jones Lang LaSalle IP, Inc. All rights reserved. All information contained herein is from sources deemed reliable; however, no representation or warranty is made to the accuracy thereof.

