



Homerton Road, London E9

Asking price £325,000 Leasehold







Description

Opportunity to purchase this modern 5th floor one bedroom apartment within Sky Apartments, Hackney E9 where you will enjoy direct views over the river Lee and Hackney Marshes.

Situated on the fifth floor and comprising of approximately 511 square feet, the property boasts an open kitchen/living area with integrated appliances, underfloor heating, private balcony, residential roof terrace, double bedroom with a separate bathroom.

Sky Apartments is located directly opposite Hackney Marshes and is within a 10 minute walk to Homerton and Hackney Wick Overground Stations with the direct area offering access to a variety of independent shops, bars and eateries. Stratford Station (Jubilee, Central & DLR) is just one stop from Hackney Wick and provides quick connections into Central London. Several well-connected bus routes run from nearby Eastway and the A12 provides easy access out of London.

Residents further benefit being a short walk to Westfield shopping centre, the V&A Museum, Saddlers Wells Theatre, Olympic Stadium and Olympic Pool to name a few. The location provides an enriching and diverse array of shopping, entertainment and sporting opportunities.

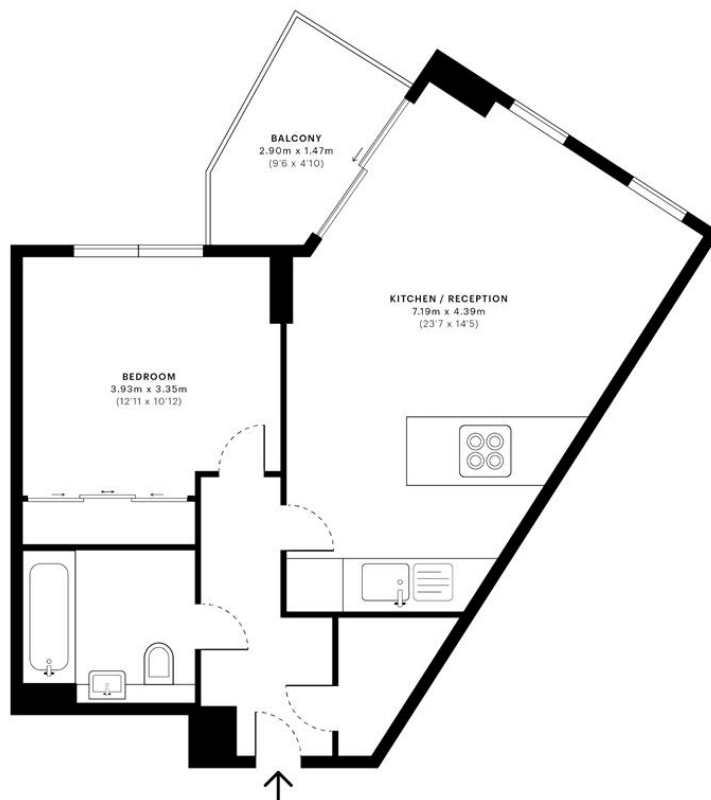
- 1 double bedroom
- 5th floor
- Concierge service
- Modern development
- Residential gymnasium
- Private balcony
- Residential roof terrace
- Underfloor heating throughout
- High speed broadband
- Views towards Queen Elizabeth Olympic Park

Floorplan

510 sq ft | 47 sq m

Sky Apartments, E9

Total Internal Area
47.41 Sqm / 510.32 Sqft



Stratford
5 Station Street,
London E15 1DA
+4420 3147 1500
Lettingsstratford@eu.jll.com

Urban living, your way.

jll.co.uk/residential

© 2019 Jones Lang LaSalle IP, Inc. All rights reserved. All information contained herein is from sources deemed reliable; however, no representation or warranty is made to the accuracy thereof.

