



Eaton Mews South, Belgravia SW1

Guide price £4,250,000

Eaton Mews South, Belgravia SW1

Guide Price
£4,250,000

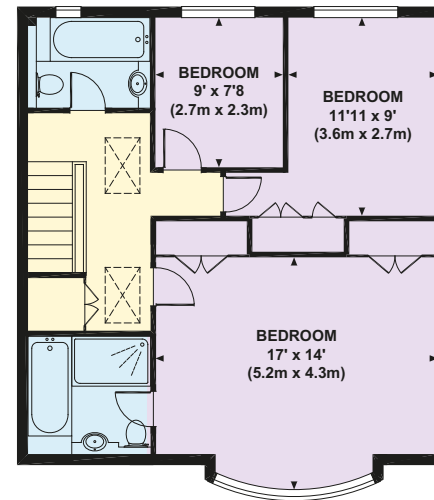
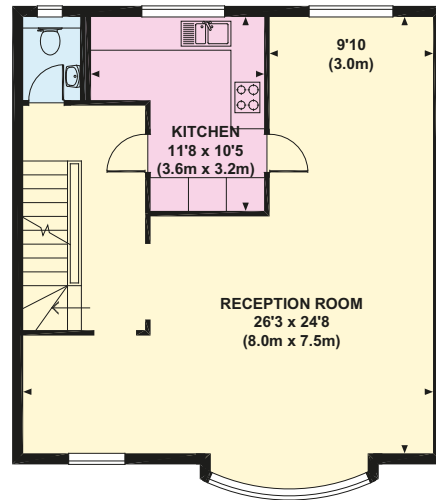
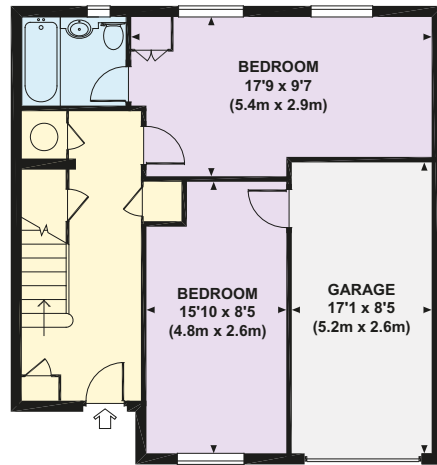
Tenure
Freehold

GIA
1,954 sq ft (181.7 sq m)

Local Authority
City of Westminster

A three storey, five bedroom mews house quietly situated in the heart of Belgravia, moments from Elizabeth Street and Sloane Square. The property benefits from an integral garage and parking in front of the house, subject to licence and permit. Subject to an annual fee, residents may gain access to the Belgrave Square gardens and tennis courts. Development potential, subject to necessary permissions and consents. (Please note that the property is currently let).

- 5 Bedrooms
- 3 Bathrooms (2 en suite)
- Reception room
- Kitchen
- Guest cloakroom
- Garage
- EPC: D



Ground Floor

First Floor

Second Floor

These particulars are for general information only and do not constitute any part of an offer or contract. All statements contained therein are made without responsibility on the part of the vendors or lessors and are not to be relied upon as statement or representation of fact. Intending purchasers or lessees must satisfy themselves, by inspection, or otherwise, as to the correctness of each of the statements or dimensions contained in these particulars. January 2019. Brochure by Capital Group 020 8671 5448