



Chesham Place, London SW1X

Price £615 per week - Part Furnished





Description

A well presented fourth floor apartment (with lift) situated in the heart of Belgravia on Chesham Place. The apartment comprises master bedroom with en suite bathroom, second double bedroom, one shower room, reception room and separate kitchen. Chesham Place is located within easy walking distance of both Sloane Street and Sloane Square.

As well as paying the rent, you may also be required to make permitted payments. Please visit jll.co.uk/fees for details of fees which may be payable when renting a property. If your tenancy does not qualify as an AST, additional fees may apply.



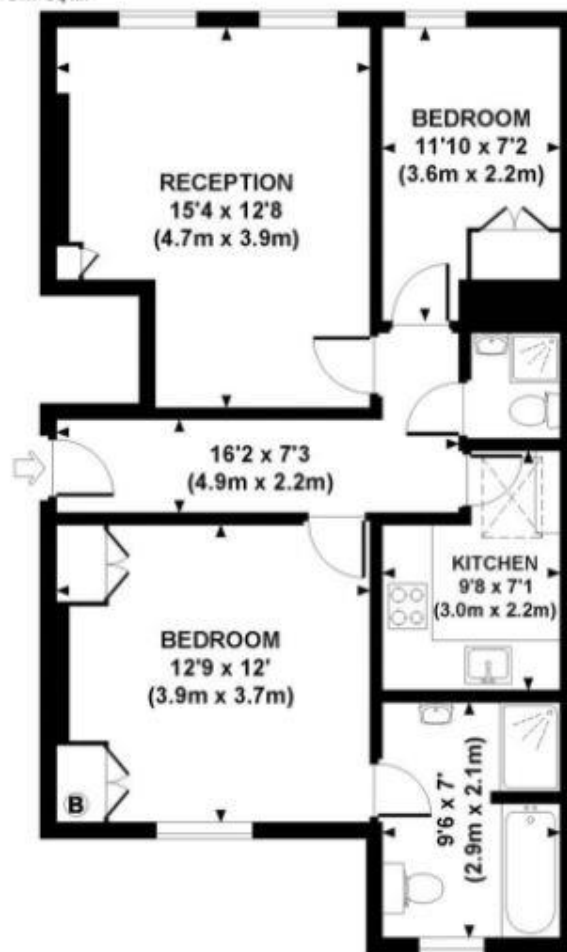
- Master bedroom with en suite bathroom
- Second double bedroom
- One further shower room
- Reception room
- Separate kitchen
- Fourth floor
- Lift
- Part furnished
- Approx. 663 sq ft (62 sq m)
- EPC: D

Floorplan

663 sq ft | 62 sq m

CHESHAM PLACE, SW1X

Approx. gross internal area
663 Sq Ft. / 61.7 Sq M.



FOURTH FLOOR

Knightsbridge
174 Brompton Road,
London SW3 1HP
020 7306 1600

Urban living, your way.

jll.co.uk/residential

© 2019 Jones Lang LaSalle IP, Inc. All rights reserved. All information contained herein is from sources deemed reliable; however, no representation or warranty is made to the accuracy thereof.

