

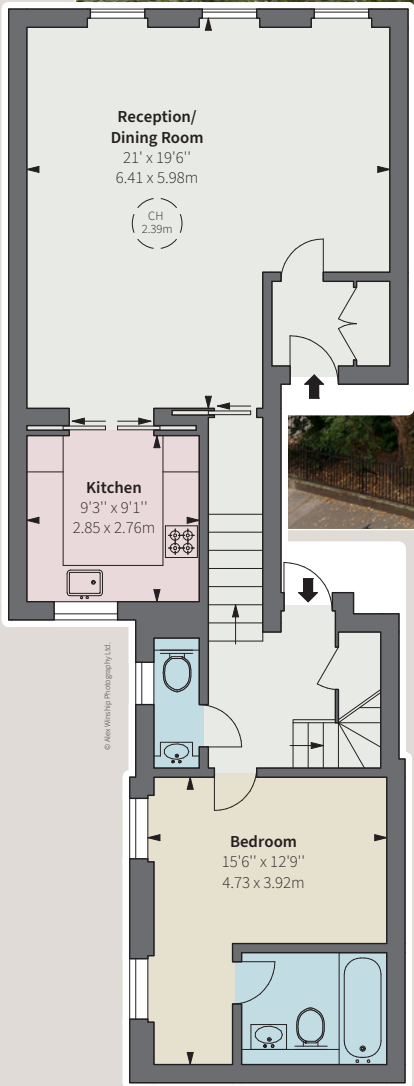


Tedworth Square
CHELSEA SW3

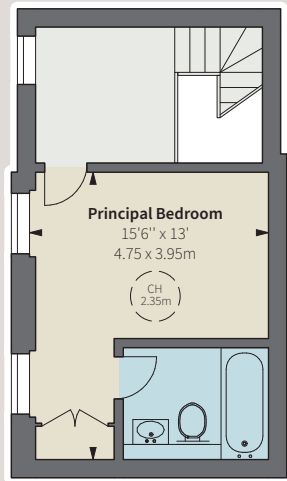


A third and fourth floor maisonette (no lift) situated in a red brick period building with delightful west facing views over the Square gardens.

Tedworth Square is located just to the south of the King's Road and in the heart of 'Old Chelsea', moments from Sloane Square and quietly placed in tranquil surroundings.



Third Floor



Fourth Floor

- 2 Double bedrooms
- 2 Bathrooms (en suite)
- Guest cloakroom
- Reception room
- Kitchen
- Entrance hall
- EPC: C

Guide price: £1,695,000
Tenure: Leasehold with 999 years
Service charge: 26% of outgoings
Ground rent: Peppercorn
Local Authority: The Royal Borough of Kensington & Chelsea

Approximate Gross Internal Area

1,136 sq ft
 105.53 sq m



THE BROOKHURST
 ALEX WINSHIP

These particulars are for general information only and do not constitute any part of an offer or contract. All statements contained therein are made without responsibility on the part of the vendors or lessors and are not to be relied upon as statement or representation of fact. Intending purchasers or lessees must satisfy themselves, by inspection, or otherwise, as to the correctness of each of the statements or dimensions contained in these particulars. This floorplan is for guidance only and not for valuation purposes. 29/09/20 JLL-200825-03GG

Floorplan for guidance only, not to scale or valuations purposes. It must not be relied upon as a statement of fact. All measurements and areas are approximate and have been prepared in accordance with the current edition of the RICS Code of Measuring Practice.

Savills Knightsbridge
 knightsbridge@savills.com
 020 7581 5234
 Savills Sloane Street
 sloanestreet@savills.com
 020 7730 0822
 savills.co.uk

JLL Knightsbridge
 knightsbridge@eu.jll.com | 020 7306 1600
 JLL Chelsea
 chelsea@eu.jll.com | 020 7399 5010
 jll.co.uk/residential