



Queen's Gate Terrace, London SW7

Price £675 per week - Unfurnished





Description

A superb lower ground floor flat with a patio area in this period building in the heart of South Kensington. The property consists of two double bedrooms, one bathroom, guest cloakroom, a large reception room, fully fitted kitchen and utility room. Further benefits include wooden flooring throughout and a small patio. Queen's Gate Terrace is ideally located minutes from the extensive shopping and transport facilities of Gloucester Road and South Kensington and the open spaces of Kensington Gardens.

As well as paying the rent, you may also be required to make permitted payments. Please visit jll.co.uk/fees for details of fees which may be payable when renting a property. If your tenancy does not qualify as an AST, additional fees may apply.

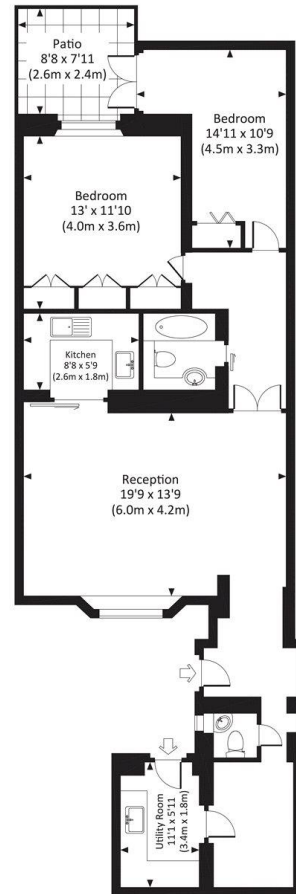
- 2 Double bedrooms
- 1 Bathroom
- Guest cloakroom
- Reception room
- Fully fitted kitchen
- Utility room
- Patio garden
- Approx. 964 sq ft (89 sq m)
- Unfurnished
- EPC: D



Floorplan

964 sq ft | 90 sq m

Approx. gross internal area
964 Sq.Ft. / 89.6 Sq.M.



LOWER GROUND FLOOR

All measurements have been made in accordance with BIC's Code of Measuring Practice which are approximate only and only for illustrative purposes. For the avoidance of doubt, Dowling Jones Design shall not be liable for any reliance on these measurements. © 2015 www.dowlingjones.com 020 7510 9933

Knightsbridge
174 Brompton Road,
London SW3 1HP
020 7306 1600
knightsbridge@eu.jll.com

Urban living, your way.

jll.co.uk/residential

© 2019 Jones Lang LaSalle IP, Inc. All rights reserved. All information contained herein is from sources deemed reliable; however, no representation or warranty is made to the accuracy thereof.

