



Chesham Place, London SW1X

Price £425 per week - Unfurnished





Description

A well presented lower ground floor apartment, situated in a popular period building in Chesham Place. The apartment comprises one double bedroom, one bathroom, reception room and a separate modern kitchen. Chesham Place is situated in the heart of Belgravia, and benefits from being within walking distance of both Knightsbridge and Victoria station, for transport links across and out of central London.

As well as paying the rent, you may also be required to make permitted payments. Please visit jll.co.uk/fees for details of fees which may be payable when renting a property. If your tenancy does not qualify as an AST, additional fees may apply.

- One double bedroom
- One bathroom
- Reception room
- Modern kitchen
- Lower ground floor
- Unfurnished
- Approx. 416 sq ft (38 sq m)
- EPC:

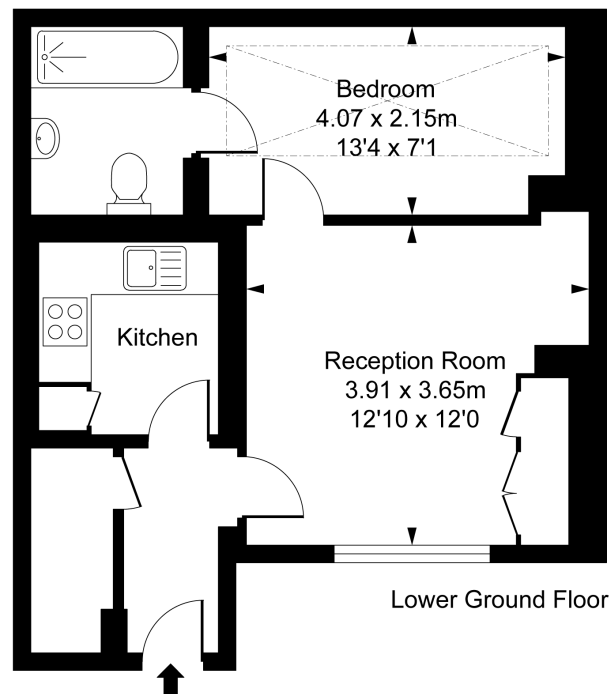


Floorplan

416 sq ft | 39 sq m

Chesham Place SW1X

Approximate Gross Internal Area
38.69 sq m / 416 sq ft



This plan is not to scale. It is for guidance and not for valuation purposes.
All measurements and areas are approximate only, and have been prepared in accordance with the current edition of the RICS Code of Measuring Practice.
© Fulham Performance

Knightsbridge
174 Brompton Road,
London SW3 1HP
020 7306 1600
knightsbridge@eu.jll.com

Urban living, your way.

jll.co.uk/residential

© 2019 Jones Lang LaSalle IP, Inc. All rights reserved. All information contained herein is from sources deemed reliable; however, no representation or warranty is made to the accuracy thereof.

