



Burnsall Street

CHELSEA SW3



Burnsall Street

CHELSEA SW3

A wide, double-fronted house in this quiet street between the King's Road and Chelsea Green in the heart of Chelsea.

Formerly the home of actress Diana Dors (the house bears a blue plaque) and now refurbished throughout, the house has the unusual feature of a large basement housing a spacious guest, or principle bedroom.

Modernised and offering bright, airy accommodation extending to 2,152 sq ft the house comprises four double bedrooms, three bathrooms (two en-suite), a large kitchen/dining room and a well-proportioned ground floor drawing room.

Burnsall Street is a one way street situated just to the north of King's Road and approximately seven minutes' walk from Sloane Square with its underground station, restaurants and shops.





- 4 Bedrooms
- Bathroom (en suite)
- 2 Shower rooms (1 en suite)
- Double reception room
- Kitchen / dining room
- Guest cloakroom
- Patio
- EPC: D

GUIDE PRICE

£4,500,000

TENURE

Freehold

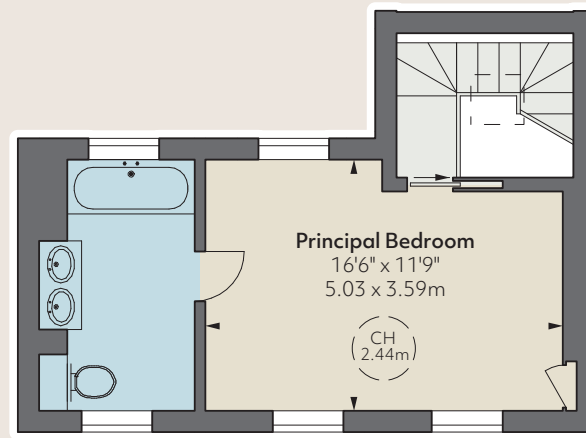
LOCAL AUTHORITY

The Royal Borough of
Kensington & Chelsea

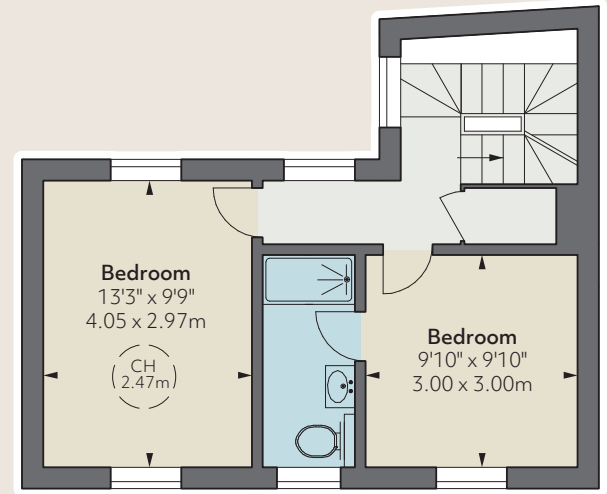
**APPROXIMATE GROSS
INTERNAL AREA**

2,152 sq ft

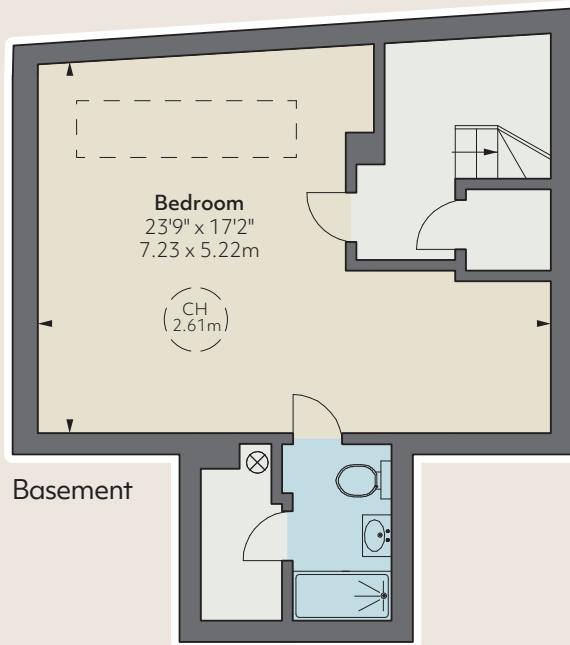
199.66 sq m



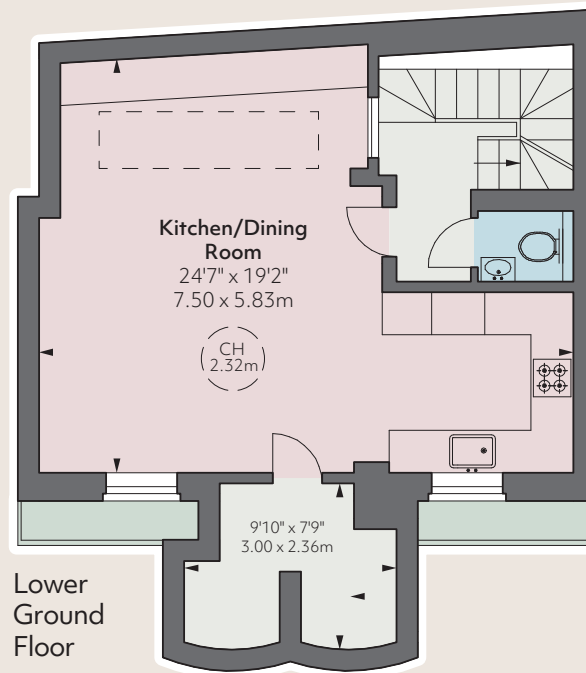
Second Floor



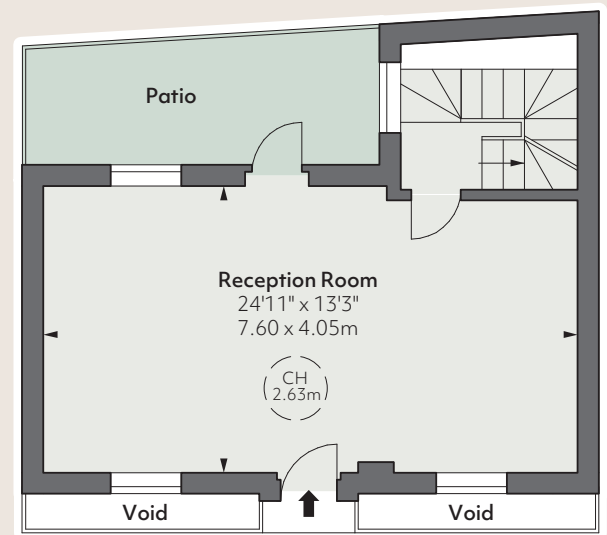
First Floor



Basement



Lower
Ground
Floor



Ground Floor

Floorplan for guidance only,
not to scale or valuations
purposes. It must not be relied
upon as a statement of fact. All
measurements and areas are
approximate and have been
prepared in accordance with the
current edition of the RICS
Code of Measuring Practice.

These particulars are for general
information only and do not
constitute any part of an offer
or contract. All statements
contained therein are made
without responsibility on the
part of the vendors or lessors
and are not to be relied upon
as statement or representation
of fact. Intending purchasers
or lessees must satisfy
themselves, by inspection, or
otherwise, as to the correctness
of each of the statements or
dimensions contained in these
particulars. This floorplan
is for guidance only and
not for valuation purposes.
24/11/20 JLL-201123-02GG

JLL Knightsbridge

174 Brompton Road, London SW3 1HP

020 7306 1610

JLL Chelsea

2 Cale Street, London SW3 3QU

020 7399 5010

jll.co.uk/primecollection

