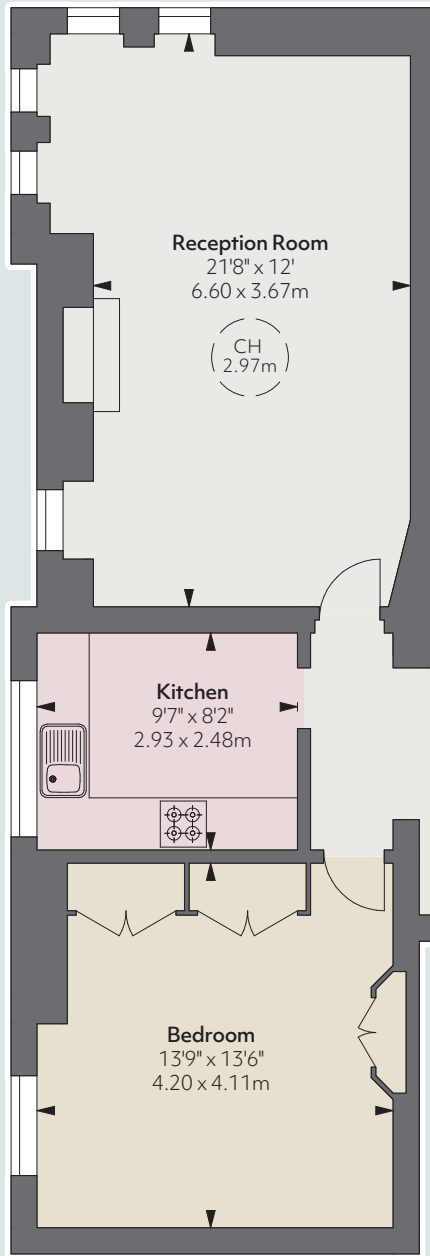


Sloane Court East

CHELSEA SW3



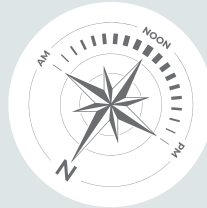
CGI FURNITURE ADDED



A wonderfully light and unusually large one bedroom flat located in a handsome red brick portered building at the southern end of Sloane Court East with lovely southerly views towards The Royal Hospital, Chelsea and the new development of Chelsea Barracks.

- Double bedroom
- Kitchen
- Hall
- Bathroom
- Reception room
- Communal central heating and hot water
- EPC: D

Approximate Gross Internal Area
735sqft
68.28sqm



© Alex Wineship Photography, Ltd.

Guide Price £950,000
Tenure Leasehold approximately 99 years
Service Charge Approximately £3,501 for 2021 plus contribution to reserve fund
Ground Rent Peppercorn
Local Authority The Royal Borough of Kensington & Chelsea



THE BROCHURE
ALEX
WINESHIP

These particulars are for general information only and do not constitute any part of an offer or contract. All statements contained therein are made without responsibility on the part of the vendors or lessors and are not to be relied upon as statement or representation of fact. Intending purchasers or lessees must satisfy themselves, by inspection, or otherwise, as to the correctness of each of the statements or dimensions contained in these particulars. This floorplan is for guidance only and not for valuation purposes. 14/04/21 JLL-210329-06GG

Floorplan for guidance only, not to scale or valuations purposes. It must not be relied upon as a statement of fact. All measurements and areas are approximate and have been prepared in accordance with the current edition of the RICS Code of Measuring Practice.

Savills Knightsbridge
knightsbridge_sales@savills.com
020 7581 5234

Savills Sloane Street
sloanestreet@savills.com
020 7730 0822

savills.co.uk



JLL Knightsbridge
knightsbridge@eu.jll.com | 020 7306 1600

JLL Chelsea
chelsea@eu.jll.com | 020 7399 5010

jll.co.uk/residential