



## Brompton Square, London SW3

Price £375 per week - Furnished







# Description

A bright first floor flat (with lift) in this period conversion on the western side of this much sought after garden square. The property consists of one double bedroom, one bathroom, reception room and a fully fitted kitchen. The flat is light and bright and it also offers a balcony and use of the wonderful Square gardens. Brompton Square is ideally located for the many transport and shopping amenities of both Knightsbridge and South Kensington.

As well as paying the rent, you may also be required to make permitted payments. Please visit [jll.co.uk/fees](http://jll.co.uk/fees) for details of fees which may be payable when renting a property. If your tenancy does not qualify as an AST, additional fees may apply.

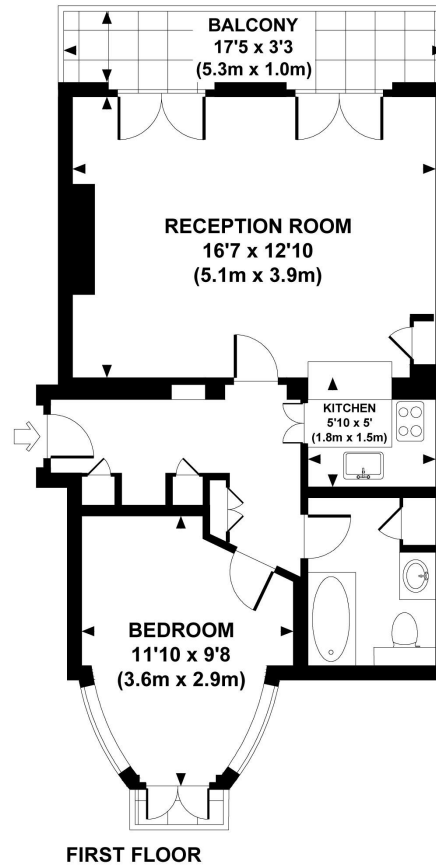
- 1 Double bedroom
- 1 Bathroom
- Reception room
- Fully fitted kitchen
- First floor
- Lift
- Balcony
- Use of communal gardens
- Approx. 463 sq ft (43 sq m)
- Furnished



# Floorplan

463 sq ft | 43 sq m

Approx. gross internal area  
463 Sq.Ft. / 43.0 Sq.M



ESP All measurements are approximate and for illustration purposes only as defined by the RICS Code of Measuring Practice in 2013. Dowling Jones Design www.dowlingjones.com 020 7610 9933

Knightsbridge  
174 Brompton Road,  
London SW3 1HP  
020 7306 1600  
knightsbridge@eu.jll.com

*Urban living, your way.*

[jll.co.uk/residential](http://jll.co.uk/residential)

© 2019 Jones Lang LaSalle IP, Inc. All rights reserved. All information contained herein is from sources deemed reliable; however, no representation or warranty is made to the accuracy thereof.

