



Chesham Place, London SW1X

Price £500 per week - Furnished





Description

A well presented ground floor apartment, situated in the heart of Belgravia on Chesham Place. The apartment comprises one large double bedroom, one bathroom, reception room and separate kitchen. Chesham Place is located within walking distance of the shops, restaurants and transport links of both Victoria and Sloane Square.

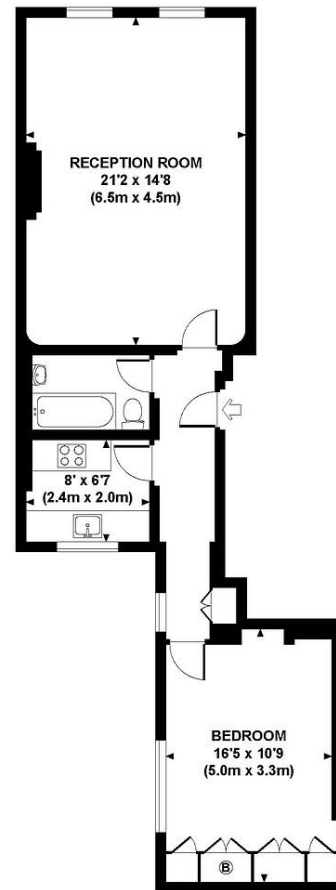
As well as paying the rent, you may also be required to make permitted payments. Please visit jll.co.uk/fees for details of fees which may be payable when renting a property. If your tenancy does not qualify as an AST, additional fees may apply.

- One double bedroom
- One bathroom
- Reception room
- Separate kitchen
- Ground floor
- Furnished
- Approx. 663 sq ft (62 sq m)
- EPC: D



CHESHAM PLACE, SW1X

Approx. gross internal area
663 Sq Ft. / 62 Sq M.



GROUND FLOOR



All measurements are approximate and for illustration purposes only as defined by the RICS Code of Measuring Practice © 2012
Dovling Jones Design www.dovlingjones.com 020 7610 9933