



## Lennox Gardens Mews, London SW1X

Price £1,750 per week - Unfurnished







# Description

A high specification and charming house in this wonderful mews just off Walton Street. The property consists of master bedroom with en suite bathroom, two further double bedrooms, one further bathroom, one shower room (en suite), guest cloakroom, a large reception room, kitchen/dining room and utility room. Further benefits include wooden floors in the reception room and parking for two cars. Lennox Gardens Mews is conveniently located for the many shops, restaurants and transport facilities of Knightsbridge and South Kensington.

As well as paying the rent, you may also be required to make permitted payments. Please visit [jll.co.uk/fees](http://jll.co.uk/fees) for details of fees which may be payable when renting a property. If your tenancy does not qualify as an AST, additional fees may apply.

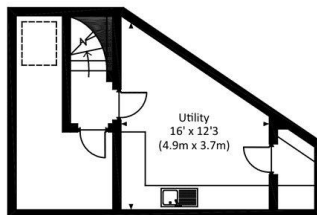
- Unfurnished house
- 3 Double bedrooms
- 2 Bathrooms (1 en suite)
- 1 Shower room (en suite)
- Guest cloakroom
- Reception room
- Kitchen/dining room
- Utility room
- Parking
- Approx. 2,046 sq ft (190 sq m)



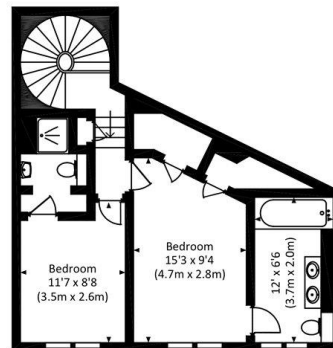
# Floorplan

2,046 sq ft | 190 sq m

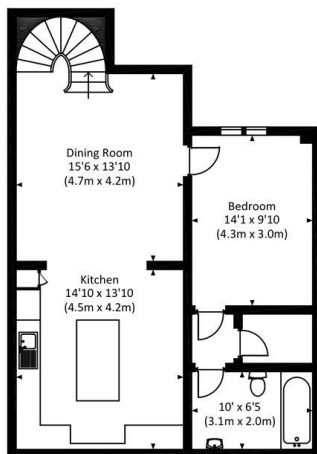
Approx. gross internal area  
2046 Sq Ft. / 190.1 Sq M.



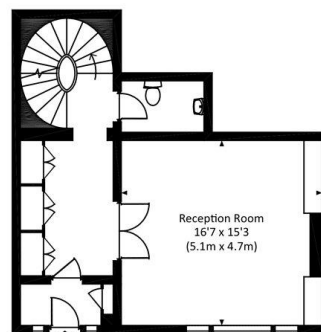
BASEMENT




FIRST FLOOR



LOWER GROUND FLOOR



GROUND FLOOR

 All measurements have been made in accordance with RICS Code of Measuring Practice which are approximate only and only for illustrative purposes. For the avoidance of doubt, Dowling Jones Design shall not be liable for any reliance on these measurements. © 2018 www.dowlingjones.com 020 7610 9933

Knightsbridge  
174 Brompton Road,  
London SW3 1HP  
+4420 7306 1600  
knightsbridge@eu.jll.com

*Urban living, your way.*

[jll.co.uk/residential](http://jll.co.uk/residential)

© 2019 Jones Lang LaSalle IP, Inc. All rights reserved. All information contained herein is from sources deemed reliable; however, no representation or warranty is made to the accuracy thereof.

