



Pont Street, London SW1X

Price £1,950 per week - Furnished





Description

A spacious and interior designed second floor flat (with lift) in this period building in the heart of Knightsbridge. The property consists of master bedroom with en suite bathroom, two further double bedrooms, one further bathroom, reception room with dining area and a fully fitted kitchen. Further benefits include wooden flooring in the reception room, elegant furnishings and caretaker. Pont Street is situated between Knightsbridge and Sloane Square with excellent transport, restaurants and shopping facilities moments away.

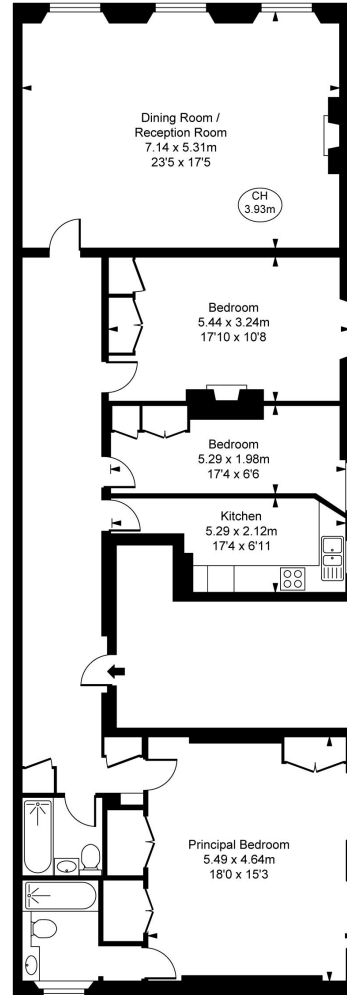
As well as paying the rent, you may also be required to make permitted payments. Please visit jll.co.uk/fees for details of fees which may be payable when renting a property. If your tenancy does not qualify as an AST, additional fees may apply.



- 3 Double bedrooms
- 2 Bathrooms (1 en suite)
- Reception room
- Fully fitted kitchen
- Second floor
- Lift
- Caretaker
- Approx. 1,501 sq ft (139 sq m)
- Furnished
- EPC: E

Floorplan

1,501 sq ft | 139 sq m



Pont Street, SW1
Approximate Gross Internal Area
137.15 sq m / 1,476 sq ft

(CH = Ceiling Heights)



Second Floor

This plan is not to scale. It is for guidance and not for valuation purposes.
All measurements and areas are approximate only, and have been prepared in accordance with the current edition of the RICS Code of Measuring Practice.
© Fulham Performance

Knightsbridge
174 Brompton Road,
London SW3 1HP
+4420 7306 1600
knightsbridge@eu.jll.com

Urban living, your way.

jll.co.uk/residential

© 2019 Jones Lang LaSalle IP, Inc. All rights reserved. All information contained herein is from sources deemed reliable; however, no representation or warranty is made to the accuracy thereof.

