



## Queen's Gate Terrace, London SW7

Price £550 per week - Furnished





# Description

A recently decorated ground floor apartment in this white stucco fronted building in South Kensington. The property consists of one double bedroom, one bathroom, a large reception room and a fully fitted kitchen. Further benefits include high ceilings and wooden flooring in the reception room. Queen's Gate Terrace is conveniently located moments from the shopping and transport amenities of Gloucester Road and South Kensington and the open spaces of Hyde Park.

As well as paying the rent, you may also be required to make permitted payments. Please visit [jll.co.uk/fees](http://jll.co.uk/fees) for details of fees which may be payable when renting a property. If your tenancy does not qualify as an AST, additional fees may apply.

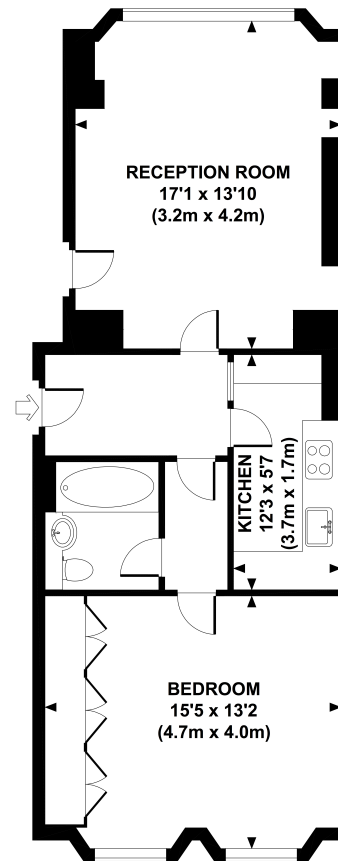


- Double bedroom
- Bathroom
- Reception room
- Fully fitted kitchen
- Ground floor
- Approx. 628 sq ft (58 sq m)
- Furnished
- EPC: E

# Floorplan

628 sq ft | 58 sq m

Approx. gross internal area  
628 Sq.Ft. / 58.4 Sq.M.



GROUND FLOOR

ESP All measurements are approximate and for illustration purposes only as defined by the RICS Code of Measuring Practice © 2014. Dowling Jones Design www.dowlingjones.com 020 7610 9913

Knightsbridge  
174 Brompton Road,  
London SW3 1HP  
+4420 7306 1600  
knightsbridge@eu.jll.com

*Urban living, your way.*

[jll.co.uk/residential](http://jll.co.uk/residential)

© 2019 Jones Lang LaSalle IP, Inc. All rights reserved. All information contained herein is from sources deemed reliable; however, no representation or warranty is made to the accuracy thereof.

