



Consort Rise House, London SW1W

Price £695 per week - Unfurnished







Description

A bright and spacious two bedroom apartment on the eighth floor (with lift) of this modern building in Westminster. The apartment comprises of one reception room, separate kitchen, master bedroom with en suite, one further double bedroom and one family bathroom. The property benefits from 24 hours concierge, lift, underground parking, residents gym and sauna. The property is in an excellent location within walking distance from St James's Park, Sloane Square and Victoria underground stations and a variety of shops and restaurants that Westminster has to offer.

Rent is payable on a monthly basis and you may be required to pay more than a month's rent in advance, depending on your circumstances. You will be required to pay a 1 week holding deposit following a successful offer. Utility bills, council tax, telephone line and broadband are not included in the rent. As well as paying the rent, you may also be required to make some additional permitted payments. If your tenancy does not qualify as an AST, additional fees may apply. Please visit jll.co.uk/fees for details of fees which may be payable when renting a property.

- Master bedroom with en suite
- Further double bedroom
- Family bathroom
- Reception room
- Separate kitchen
- Unfurnished/ Furnished
- Eighth Floor
- Lift
- 24 Hours concierge
- Underground parking

Floorplan

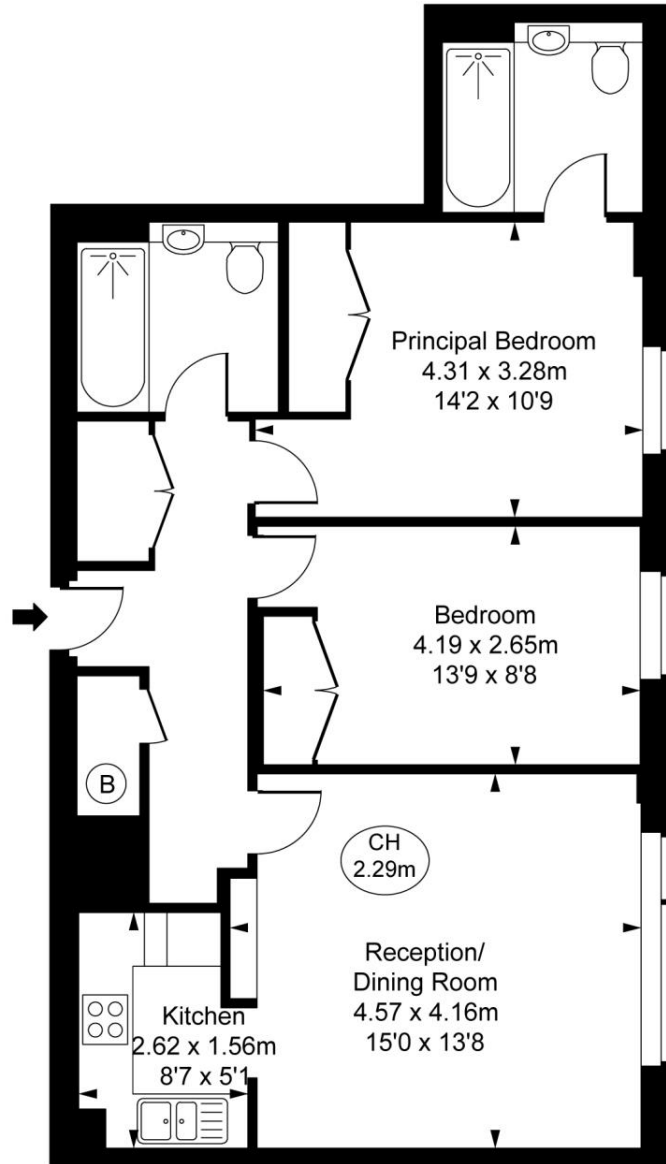
748 sq ft | 70 sq m



Consort Rise House, SW1W

Approximate Gross Internal Area
69.51 sq m / 748 sq ft

(CH = Ceiling Heights)



Eighth Floor

This plan is not to scale. It is for guidance and not for valuation purposes.
All measurements and areas are approximate only, and have been prepared in accordance with the current edition of the RICS Code of Measuring Practice.
© Fulham Performance

Knightsbridge
174 Brompton Road,
London SW3 1HP
+4420 7306 1600
SalesKnightsbridge@jll.com

Urban living, your way.

jll.co.uk/residential

© 2019 Jones Lang LaSalle IP, Inc. All rights reserved. All information contained herein is from sources deemed reliable; however, no representation or warranty is made to the accuracy thereof.

