



Boardwalk Place, E14

Guide price £590,000 Leasehold





Description

A recently refurbished, two bedroom, two bathroom apartment with allocated parking and balcony giving views towards the dock.

Boardwalk Place is an exclusive low density development located between Poplar Marina and Blackwall Basin within close proximity of Canary Wharf amenities.

Canary Wharf DLR and Underground stations are located just 0.5 mile away and the new Crossrail station, due to complete in 2020, will further improve transport links.

- 2 Bedrooms
- 2 Bathrooms
- Recently refurbished
- 2nd Floor
- Dock facing balcony
- Allocated parking
- Day porter
- Canary Wharf DLR - 0.5 mile
- Blackwall DLR - 0.4 mile
- Approx. 821 sq ft (76 sq m)



Floorplan

821 sq ft | 76.3 sq m

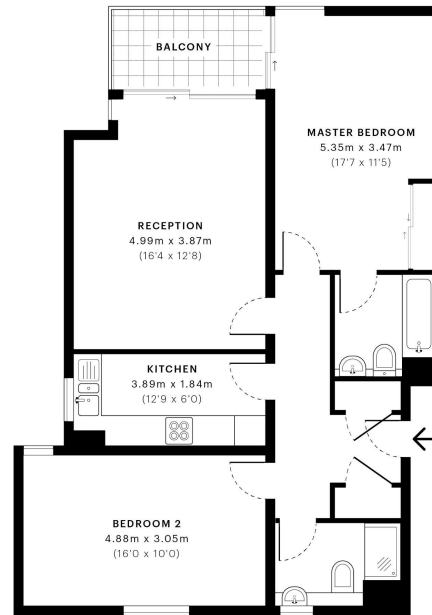


Boardwalk Place, E14

CAPTURE DATE
09/10/2019

LASER SCAN POINTS
34,276,353

GROSS INTERNAL AREA
76.3 Sqm / 821.0 Sqft



— Second Floor

GROSS INTERNAL AREA
The footprint of the property
76.3 Sqm / 821.0 Sqft

NET AREA (INTERNAL)
Excludes walls and external features
74.3 Sqm / 799.6 Sqft

EXTERNAL STRUCTURAL FEATURES
Balconies, terraces, verandas etc.
4.4 Sqm / 47.0 Sqft

RESTRICTED HEAD HEIGHT
Limited use area under 1.8m
0.0 Sqm / 0.0 Sqft



Spec floor plans are produced in accordance with the Royal Institution of Chartered Surveyors' Property Measurement Standards. Plots and gardens are illustrative only and are excluded from all area calculations. Due to rounding, numbers may not add up precisely. All measurements shown for the individual room lengths and widths are the maximum points of measurements captured in the scan.



IPMS 2B RESIDENTIAL
81.1 Sqm / 873.0 Sqft

IPMS 3C RESIDENTIAL
78.1 Sqm / 851.6 Sqft

SPEC ID
5d9c77ba30921809f7037f18

Canary Wharf
11 Westferry Circus,
London E14 4HE
0207 715 9700

Urban living, your way.

jll.co.uk/residential

© 2019 Jones Lang LaSalle IP, Inc. All rights reserved. All information contained herein is from sources deemed reliable; however, no representation or warranty is made to the accuracy thereof.

