



**GLADSTONE HOUSE, DOWELL STREET
GREENWICH SE10**





Superbly located for all of the attractions that Greenwich has to offer, comes this two bedroom, two bathroom apartment with parking, representing a fantastic opportunity.

The property is located within the hugely popular New Capital Quay development and has the added benefit of an up to date EWS1 certification.

The apartment is located on the seventh floor with bright accommodation in all rooms. This popular River Side development proves attractive to City Professionals looking for a lifestyle on the doorstep as local shops, bars, restaurants and the DLR are just yards away.

Offered chain free and priced for a quick sale this property is a real find.

- 2 Bedrooms
- 2 Bathrooms
- 7th Floor modern apartment
- Close to Central Greenwich
- Large balcony
- Beautifully presented throughout
- Close to mainline and DLR stations
- EWS1 Form in place
- No onward chain
- EPC: B

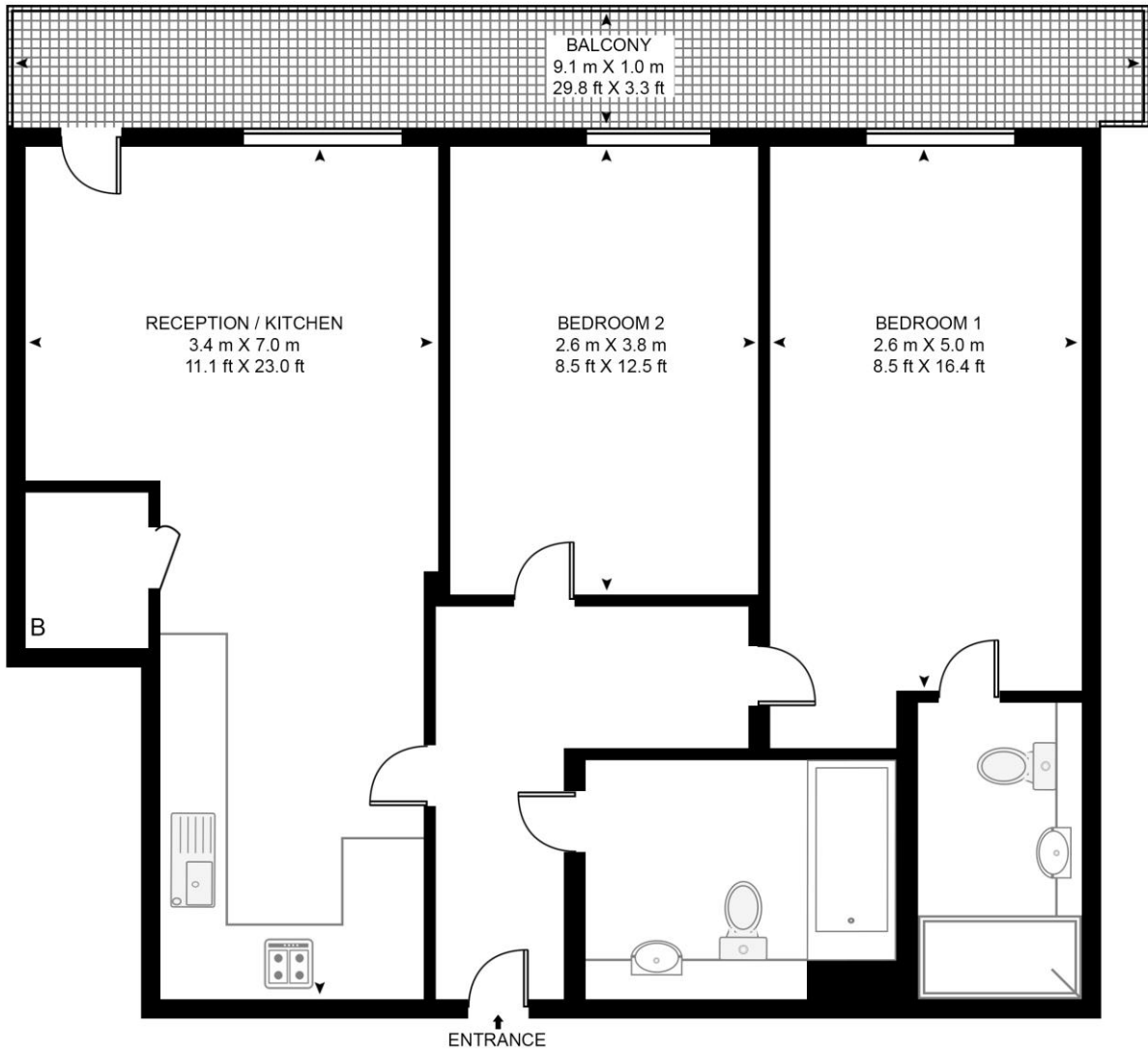
PRICE
£500,000

GROSS INTERNAL AREA
618 sq ft (57.4 sq m)

LOCAL AUTHORITY
Royal Borough of Greenwich

GLADSTONE HOUSE

APPROXIMATE GROSS INTERNAL FLOOR AREA 618 SQ.FT (57.4 SQ.M)



SEVENTH FLOOR

HDVA

This floor plan has been defined by the RICS Code of Measurement. This floor plan and all others are for approximate representative purposes only and upon usage is agreed to as such by the client.

WWW: hdvirtualart.com | TEL: 0203.974.1567 | EMAIL: info@hdvirtualart.com

22 College Approach
Greenwich
London
SE10 9HY

These particulars are for general information only and do not constitute any part of an offer or contract. All statements contained therein are made without responsibility on the part of the vendors or lessors and are not to be relied upon as statement or representation of fact. Intending purchasers or lessees must satisfy themselves, by inspection, or otherwise, as to the correctness of each of the statements or dimensions contained in these particulars..