



## Moulding Lane, London SE14

Guide price £380,000 Leasehold









## Description

JLL are pleased to offer this modern one bedroom apartment on the first floor in the exciting, new Anthology Deptford Foundry development.

This lovely apartment offers a high standard of finish and is light and airy throughout. It briefly comprises entrance hallway, spacious open plan reception room leading to a large, private balcony and fantastic modern kitchen with a range of integrated appliances, one double bedroom with built in wardrobes and modern contemporary bathroom.

Anthology Deptford Foundry sits on the site of a former metal foundry formed in 1831 by engineer Josiah Stone. Its position in the heart of one of south-west London's most vibrant and creative neighbourhoods and extremely well located for New Cross and Deptford mainline stations which provides excellent links to Canary Wharf, City and London's WestEnd.

The property also benefits from bike storage and a 12 hour concierge service.

Offered chain free, early viewings are highly recommended.

- 1 Bedroom
- 1 Bathroom
- 1st Floor modern apartment
- Large private balcony
- Approx. 595 sq ft (55.3 sq m)
- Close to transport links
- No onward chain
- EPC: B

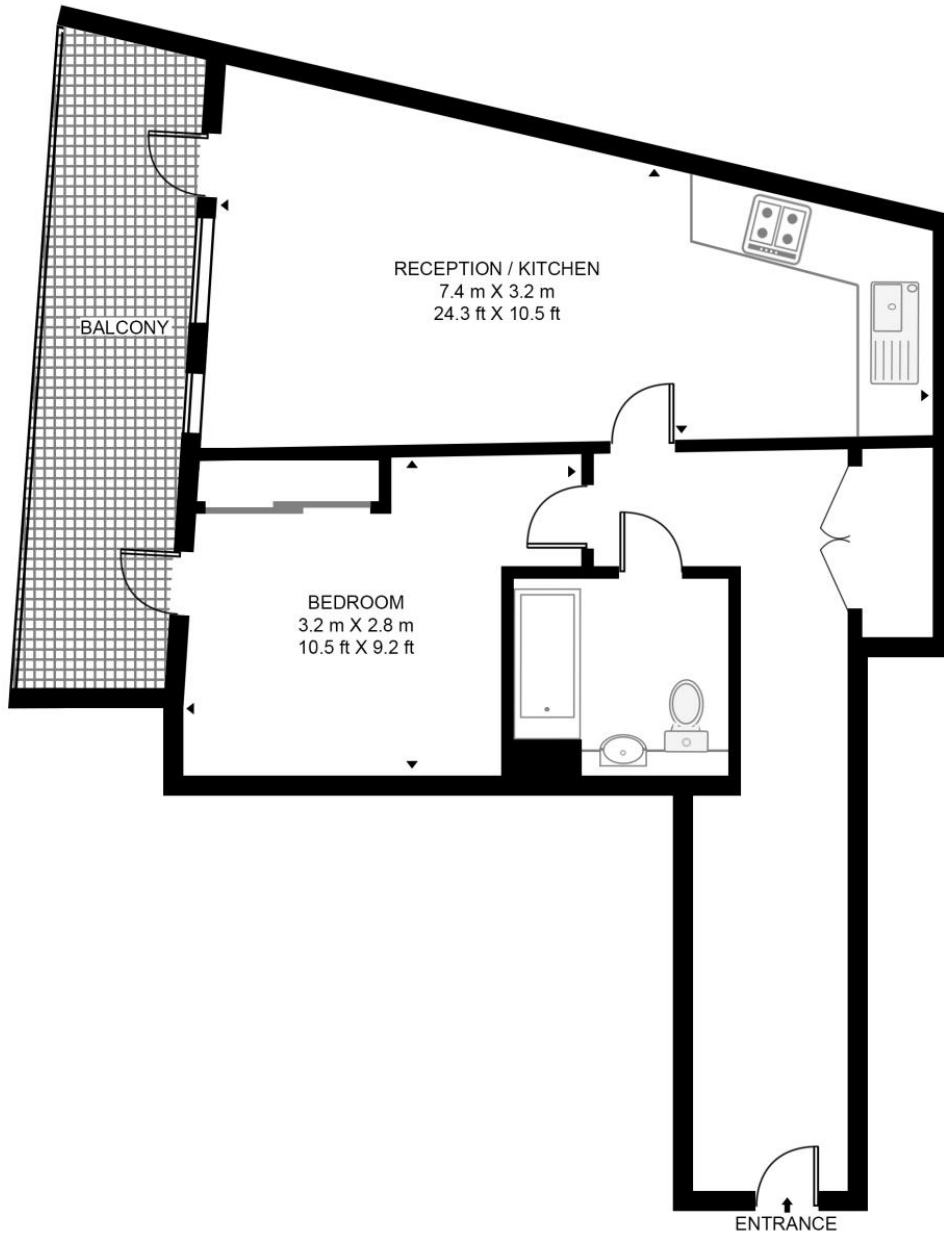


# Floorplan

595 sq ft | 55 sq m

## ARBOR HOUSE APARTMENTS

APPROXIMATE GROSS INTERNAL FLOOR AREA 595 SQ.FT (55.3 SQ.M)



FIRST FLOOR



This floor plan has been defined by the RICS Code of Measurement. This floor plan and all others are for approximate representative purposes only and upon usage is agreed to as such by the client.

WWW: [hdvirtualart.com](http://hdvirtualart.com) | TEL: 0203.974.1567 | EMAIL: [info@hdvirtualart.com](mailto:info@hdvirtualart.com)

Greenwich  
22 College Approach,  
London SE10 9HY  
02088589986  
[greenwichlettings@eu.jll.com](mailto:greenwichlettings@eu.jll.com)

*Urban living, your way.*

[jll.co.uk/residential](http://jll.co.uk/residential)

© 2019 Jones Lang LaSalle IP, Inc. All rights reserved. All information contained herein is from sources deemed reliable; however, no representation or warranty is made to the accuracy thereof.

