



DREW HOUSE, WHARF STREET
GREENWICH SE8





This lovely two bedroom, two bathroom riverside apartment forms part of the Paynes and Bothwich development which since construction has continued to prove popular with young professionals looking for their first time purchase.

Located along the Thames Path and EWS1 compliant, Drew House has the added benefit of housing the concierge.

The accommodation comprises two double bedrooms, the master with fitted wardrobes and en suite shower room, a good sized lounge dining room with a modern fitted kitchen and a further bathroom. There is also a sizable terrace off of the lounge and both bedrooms.

Presented in excellent decorative order we feel this apartment represents a fantastic first purchase.

Early viewings are highly recommended.

- 2 Bedrooms
- 2 Bathrooms
- 2nd Floor modern apartment
- Large private terrace
- Neutral tones throughout
- EWS1 Compliant
- Close to transport links
- Underground communal parking
- Leasehold – (986 years)
- Close to Central Greenwich
- Concierge services
- EPC: B

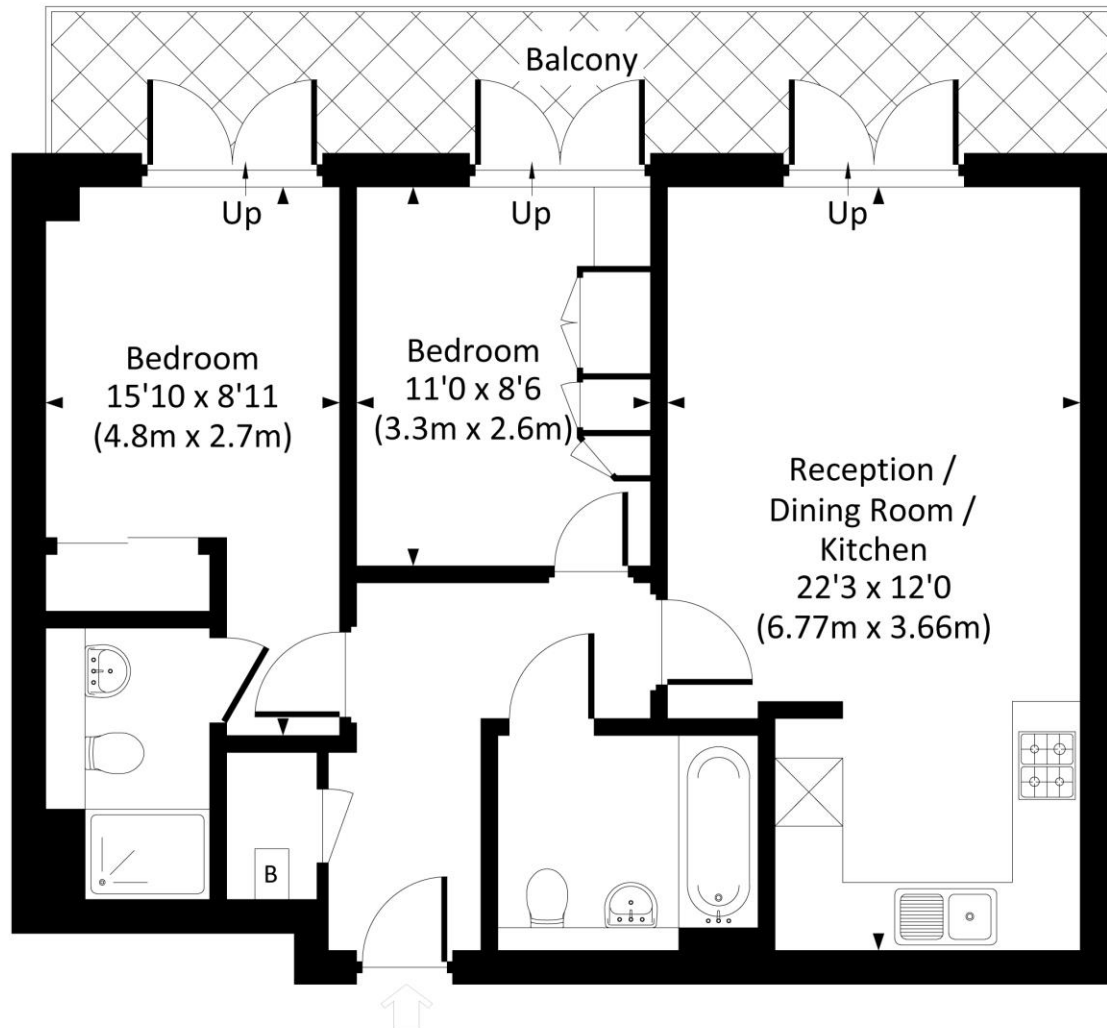
PRICE
£485,000

GROSS INTERNAL AREA
659 sq ft (61.2 sq m)

LOCAL AUTHORITY
Royal Borough of Greenwich

Drew House, Wharf Street, SE8

Approx. gross internal area
659 Sq Ft. / 61.2 Sq M.



SECOND FLOOR



All measurements have been made in accordance with RICS code of Measuring Practice which are approximate only and only for illustrative purposes. For the avoidance of doubt, Dowling Jones Design shall not be liable for any reliance on these measurements. © 2021 www.dowlingjones.com 020 7610 9933

22 College Approach
Greenwich
London
SE10 9HY

These particulars are for general information only and do not constitute any part of an offer or contract. All statements contained therein are made without responsibility on the part of the vendors or lessors and are not to be relied upon as statement or representation of fact. Intending purchasers or lessees must satisfy themselves, by inspection, or otherwise, as to the correctness of each of the statements or dimensions contained in these particulars..