

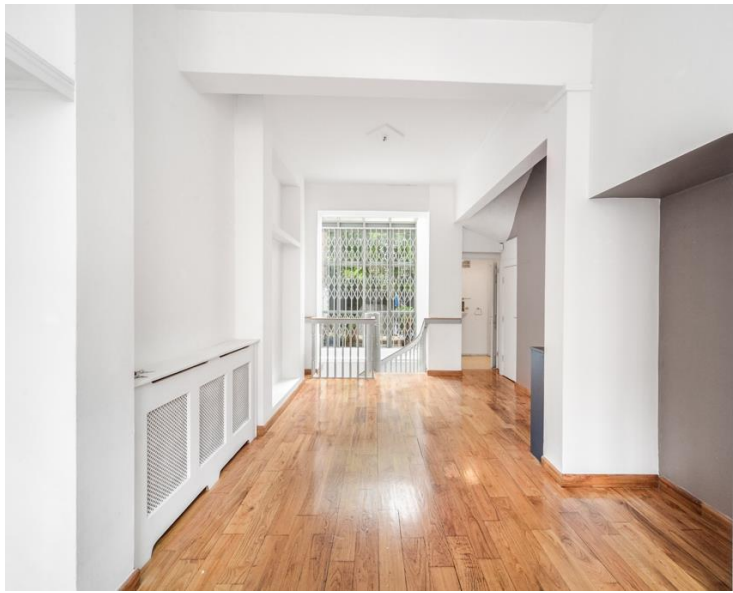


# College Approach, London SE10

Guide price £995,000 Leasehold







## Description

Representing a fantastic and quite rare investment opportunity comes this Commercial and residential leasehold terrace which is located on the one way system in the heart of the Royal Borough of Greenwich.

With some 1,364 Sq Ft spread out over four levels this property lends itself to a number of options. This Prime property is in need of refurbishment throughout but represents a real find and a one off.

Early viewings are highly recommended.

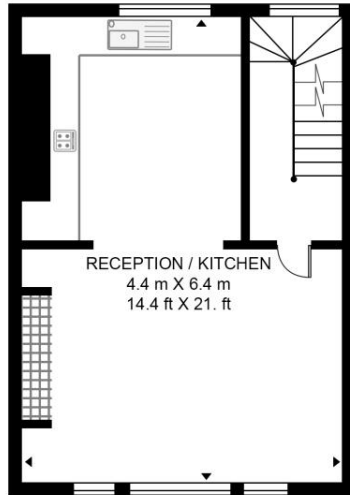
- 2 Bedrooms
- 1 Bathroom
- Period apartment
- Commercial unit below
- Central Greenwich location
- Approx. 1,364 sq ft (126.7 sq m)
- Residential parking permit
- In need of modernisation
- Close to mainline and DLR stations
- EPC: D

# Floorplan

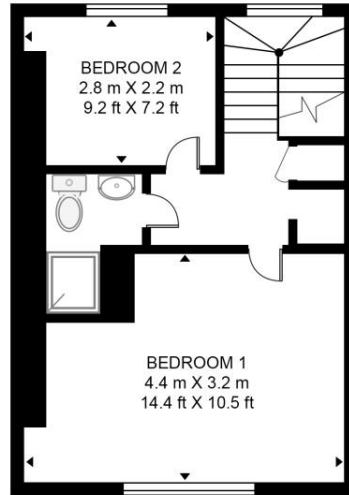
1,364 sq ft | 127 sq m

## COLLEGE APPROACH

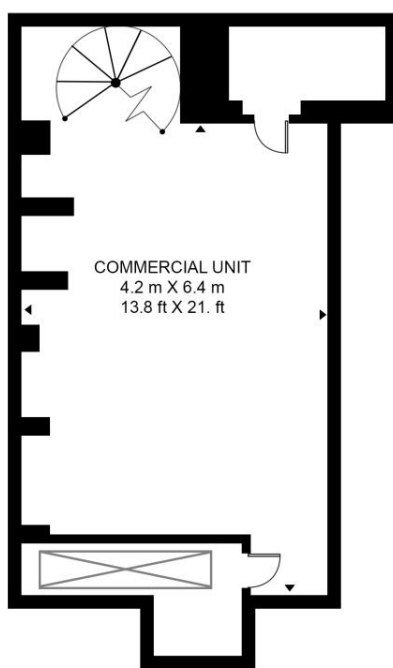
APPROXIMATE GROSS INTERNAL FLOOR AREA 1364 SQ.FT (126.7 SQ.M)



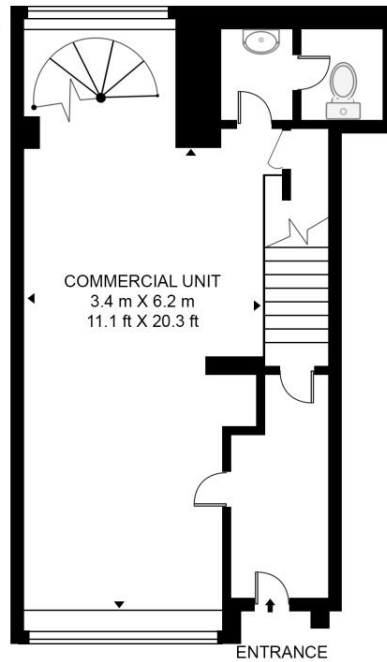
FIRST FLOOR



SECOND FLOOR



LOWER GROUND FLOOR



GROUND FLOOR

**HDVA**

This floor plan has been defined by the RICS Code of Measurement. This floor plan and all others are for approximate representative purposes only and upon usage is agreed to as such by the client.

WWW: [hdvirtualart.com](http://hdvirtualart.com) | TEL: 0203.974.1567 | EMAIL: [info@hdvirtualart.com](mailto:info@hdvirtualart.com)

Greenwich  
22 College Approach,  
London SE10 9HY  
02088589986  
[greenwichlettings@eu.jll.com](mailto:greenwichlettings@eu.jll.com)

*Urban living, your way.*

[jll.co.uk/residential](http://jll.co.uk/residential)

© 2019 Jones Lang LaSalle IP, Inc. All rights reserved. All information contained herein is from sources deemed reliable; however, no representation or warranty is made to the accuracy thereof.

