



## Dowells Street, London SE10

Guide price £680,000 Leasehold









## Description

A stunning second floor three bedroom, two bathroom apartment with direct river views within the brand new Capital Quay development.

The accommodation comprises large entrance hall, open plan reception and modern fitted kitchen with direct access onto a winter garden offering stunning river views. Three good sized bedrooms, master with en-suite shower room and a second modern family bathroom

The riverside development is located within a short walk from the Cutty Sark DLR and Greenwich for both the DLR and mainline station both offering direct links to City, Westend and Canary Wharf.

The property also comes with underground secure parking and concierge service. Offered with no onward chain, early viewings are highly recommended.

- 3 Bedrooms
- 2 Bathrooms (1 En-suite)
- Winter garden
- Stunning river views
- 2nd Floor
- Approx. 813 sq ft (75.5 sq m)
- Leasehold
- No onward chain
- EPC: B

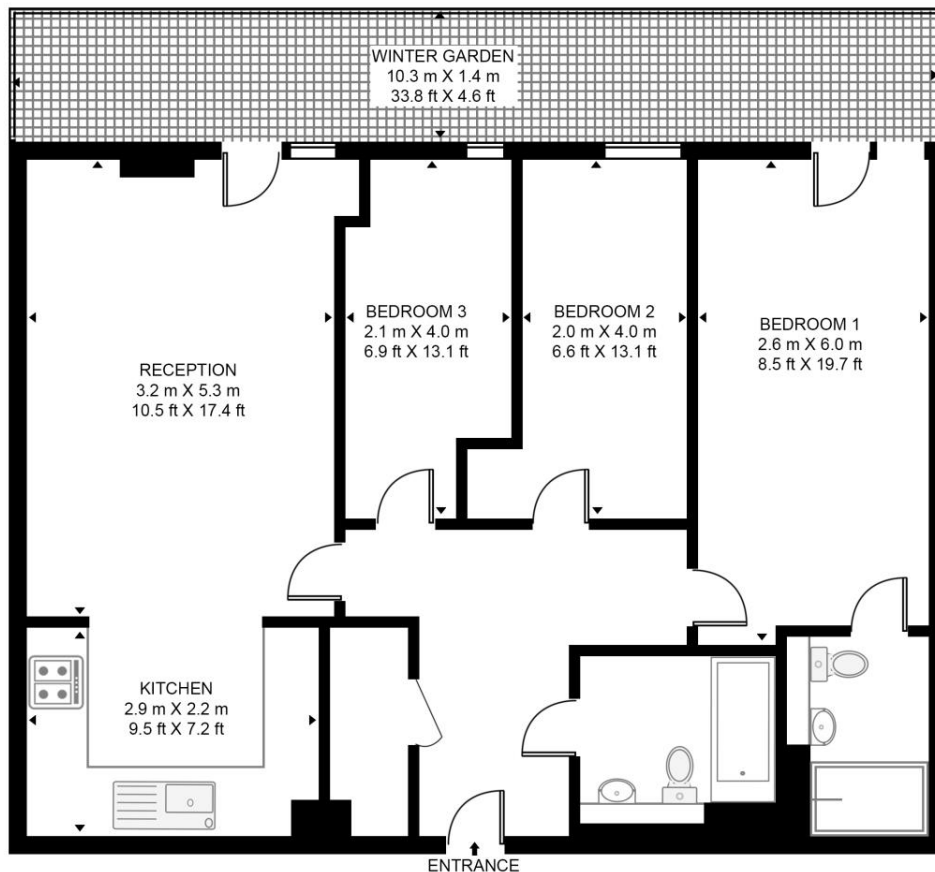


# Floorplan

813 sq ft | 76 sq m

## DUNDAS COURT, 29 DOWELLS STREET

APPROXIMATE GROSS INTERNAL FLOOR AREA 813 SQ.FT (75.5 SQ.M)



SECOND FLOOR



This floor plan has been defined by the RICS Code of Measurement. This floor plan and all others are for approximate representative purposes only and upon usage is agreed to as such by the client.

WWW: [hdvirtualart.com](http://hdvirtualart.com) | TEL: 0203.974.1567 | EMAIL: [info@hdvirtualart.com](mailto:info@hdvirtualart.com)

Greenwich  
22 College Approach,  
London SE10 9HY  
02088589986  
[greenwichlettings@eu.jll.com](mailto:greenwichlettings@eu.jll.com)

*Urban living, your way.*

[jll.co.uk/residential](http://jll.co.uk/residential)

© 2019 Jones Lang LaSalle IP, Inc. All rights reserved. All information contained herein is from sources deemed reliable; however, no representation or warranty is made to the accuracy thereof.

