



EARLSWOOD STREET,  
GREENWICH SE10







**Ideally located in the heart of East Greenwich, this two bedroom, three storey house is light and spacious and boasts period features throughout.**

The property comprises a large fitted kitchen with room to dine with access to a private and mature garden. To the first floor of the property is a large through reception room with original stripped wood flooring and period fireplaces. The property further comprises two double bedrooms and a family bathroom suite.

Offered with no onward chain, early viewings are highly recommended.

- 2 Bedrooms
- 1 Bathroom
- 2 Reception rooms
- Semi-detached house
- East Greenwich location
- Secure rear garden
- Close to Maze Hill mainline station
- No onward chain
- EPC: D

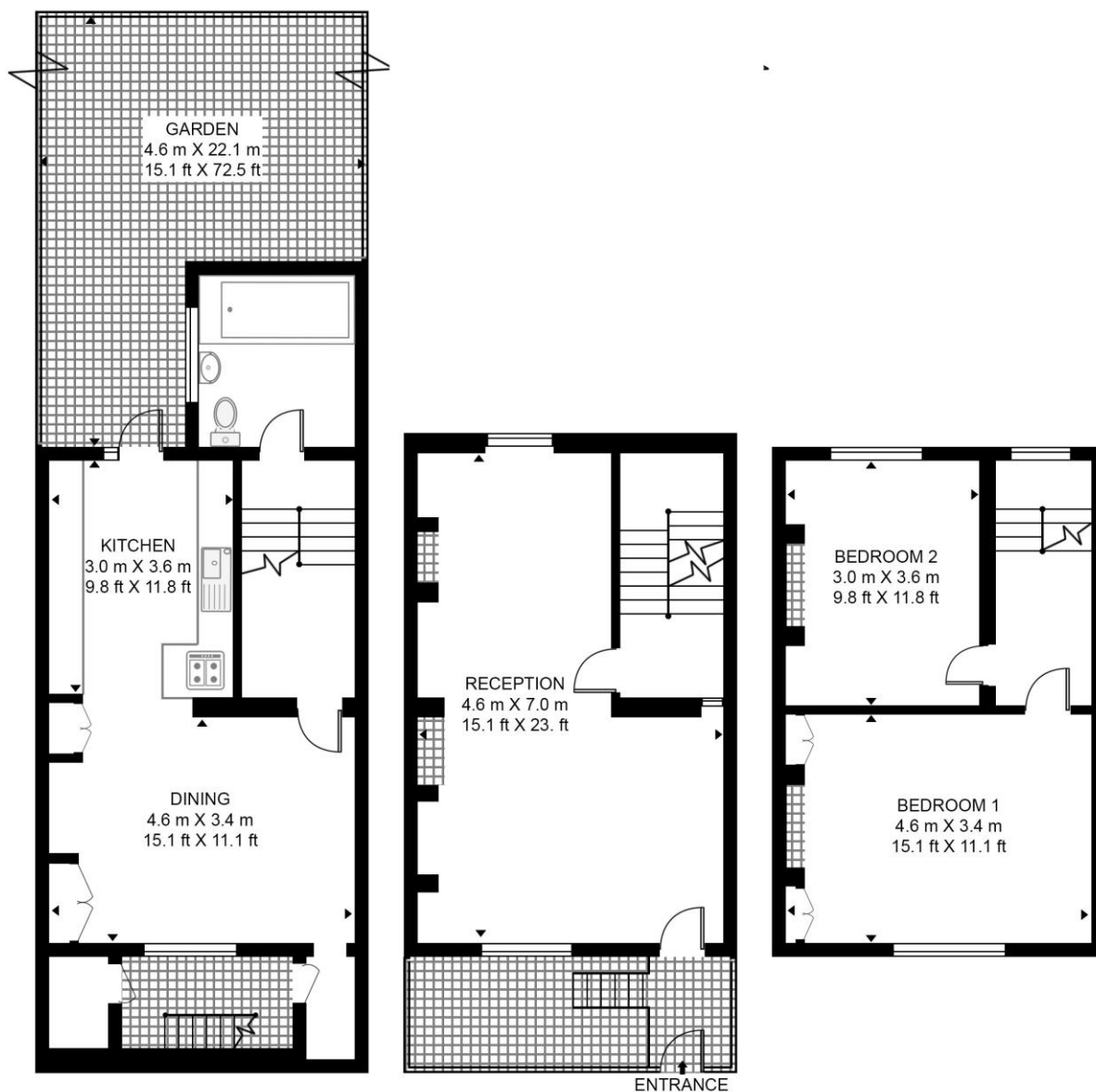
**PRICE**  
£835,000

**GROSS INTERNAL AREA**  
1,142 sq ft (106.1 sq m)

**LOCAL AUTHORITY**  
Royal Borough of Greenwich

## EARLSWOOD STREET

APPROXIMATE GROSS INTERNAL FLOOR AREA 1142 SQ.FT (106.1 SQ.M)



# HDVA

This floor plan has been defined by the RICS Code of Measurement. This floor plan and all others are for approximate representative purposes only and upon usage is agreed to as such by the client.

WWW: [hdvirtualart.com](http://hdvirtualart.com) | TEL: 0203.974.1567 | EMAIL: [info@hdvirtualart.com](mailto:info@hdvirtualart.com)

22 College Approach  
Greenwich  
London  
SE10 9HY

These particulars are for general information only and do not constitute any part of an offer or contract. All statements contained therein are made without responsibility on the part of the vendors or lessors and are not to be relied upon as statement or representation of fact. Intending purchasers or lessees must satisfy themselves, by inspection, or otherwise, as to the correctness of each of the statements or dimensions contained in these particulars..