



Pelton Road, London SE10

Guide price £799,950 Freehold







Description

This superb Victorian terrace home located on this popular residential street has been beautifully restored and renovated by the current owners.

The accommodation principally offers a through lounge with handy built in storage solutions. This leads into the beautifully fitted Neptune kitchen and then doors out to the stunning, South facing garden. To the rear of the garden you will find a handy home studio. Upstairs comes two double bedrooms and the most stunning bathroom.

To fully appreciate the fabulous home an early internal inspection is a must as the current owners have clearly invested over time and have given careful consideration to the detail and the neutral tones throughout.

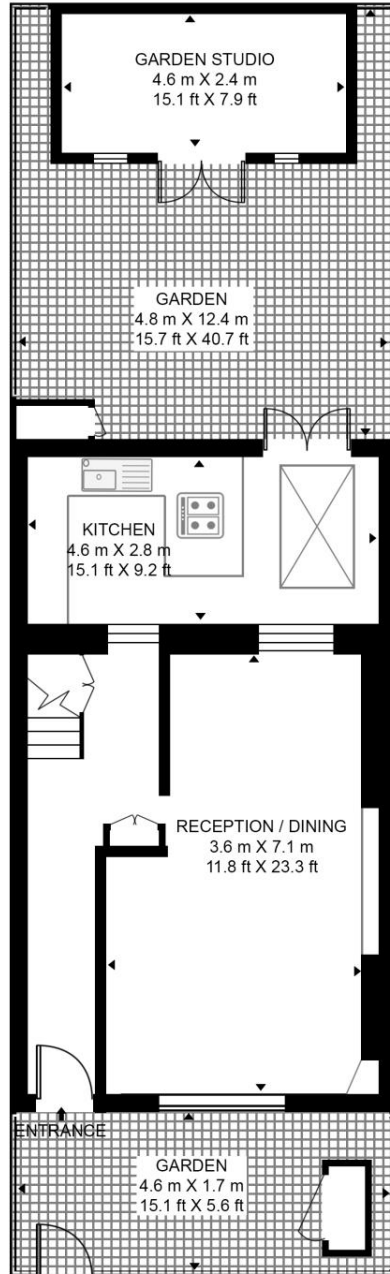
- 2 Bedroom
- 1 Bathroom
- Victorian terraced house
- South-facing rear garden
- Home studio
- Approx. 912 sq ft (84.7 sq m)
- Beautifully presented throughout
- Close to Maze Hill mainline station
- EPC: D

Floorplan

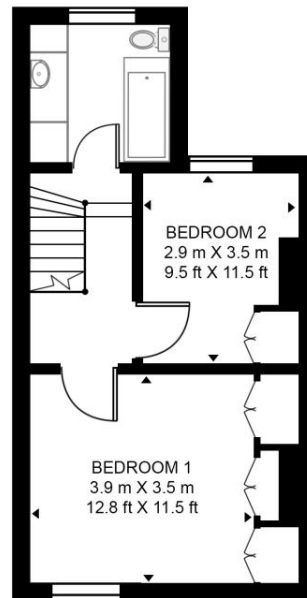
912 sq ft | 85 sq m

PELTON ROAD

APPROXIMATE GROSS INTERNAL FLOOR AREA 912 SQ.FT (84.7 SQ.M)
(GARDEN STUDIO 118 SQ.FT (11 SQ.M))



GROUND FLOOR



FIRST FLOOR

HDVA

This floor plan has been defined by the RICS Code of Measurement. This floor plan and all others are for approximate representative purposes only and upon usage is agreed to as such by the client.

WWW: hdvirtualart.com | TEL: 0203.974.1567 | EMAIL: info@hdvirtualart.com

Greenwich
22 College Approach,
London SE10 9HY
02088589986
greenwichlettings@eu.jll.com

Urban living, your way.

jll.co.uk/residential

© 2019 Jones Lang LaSalle IP, Inc. All rights reserved. All information contained herein is from sources deemed reliable; however, no representation or warranty is made to the accuracy thereof.

