



Conington Road, London SE13

Guide price £315,000 Leasehold





Description

Located on the 5th floor, is this smart one bedroom apartment in the ever popular Silworks development, located only a stone throw away from Elverson Road DLR, mainline station and Lewisham amenities.

The property offers one double bedroom, family bathroom with shower and a modern, open plan kitchen leading to a spacious lounge with a particularly large balcony.

The property is offered to the market with no onward chain, early viewings are highly recommended.

- 1 Bedroom
- 1 Bathroom
- Modern and contemporary accommodation
- Sunny balcony
- Walk to mainline and DLR
- Local amenities
- 454 Approx Sq Ft (42.2 sq m)
- EPC: B

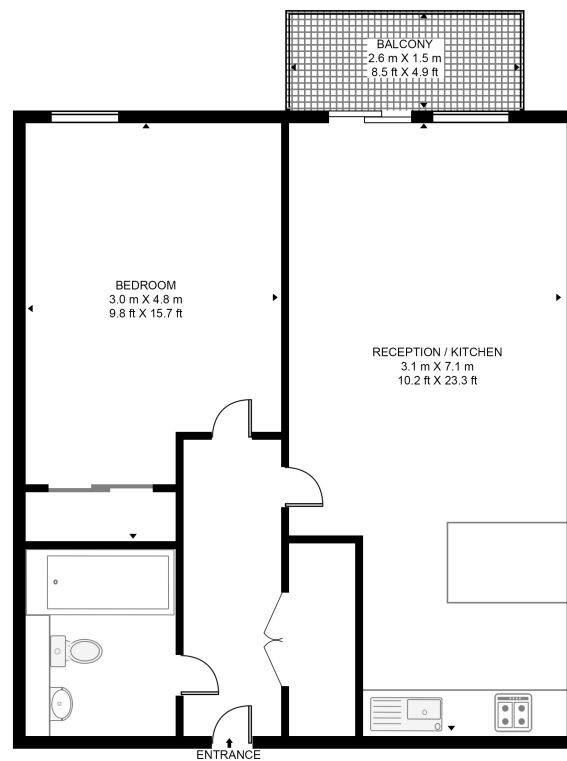


Floorplan

454 sq ft | 42 sq m

BAQUBA BUILDING

APPROXIMATE GROSS INTERNAL FLOOR AREA 454 SQ.FT (42.2 SQ.M)



FIFTH FLOOR

HDVA

This floor plan has been defined by the RICS Code of Measurement. This floor plan and all others are for approximate representative purposes only and upon usage is agreed to as such by the client.
WWW: hdvirtualart.com | TEL: 0203.974.1567 | EMAIL: info@hdvirtualart.com

Greenwich
22 College Approach,
London SE10 9HY
02088589986
greenwichlettings@eu.jll.com

Urban living, your way.

jll.co.uk/residential

© 2019 Jones Lang LaSalle IP, Inc. All rights reserved. All information contained herein is from sources deemed reliable; however, no representation or warranty is made to the accuracy thereof.

