

# Conington Road, London SE13

Guide price £315,000 Leasehold







## Description

Located on the 5th floor, is this smart one bedroom apartment in this modern development conveniently located just 100 meters from Elverson Road DLR, local shops and Lewisham town centre.

The property is only a stone throw away from Elverson Road DLR and easy walking distance of both Blackheath and Greenwich town centre. The property offers one double bedroom, family bathroom with shower and a modern, open plan kitchen leading to a spacious lounge with balcony.

The property is offered to the market with no onward chain, early viewings are highly recommended.

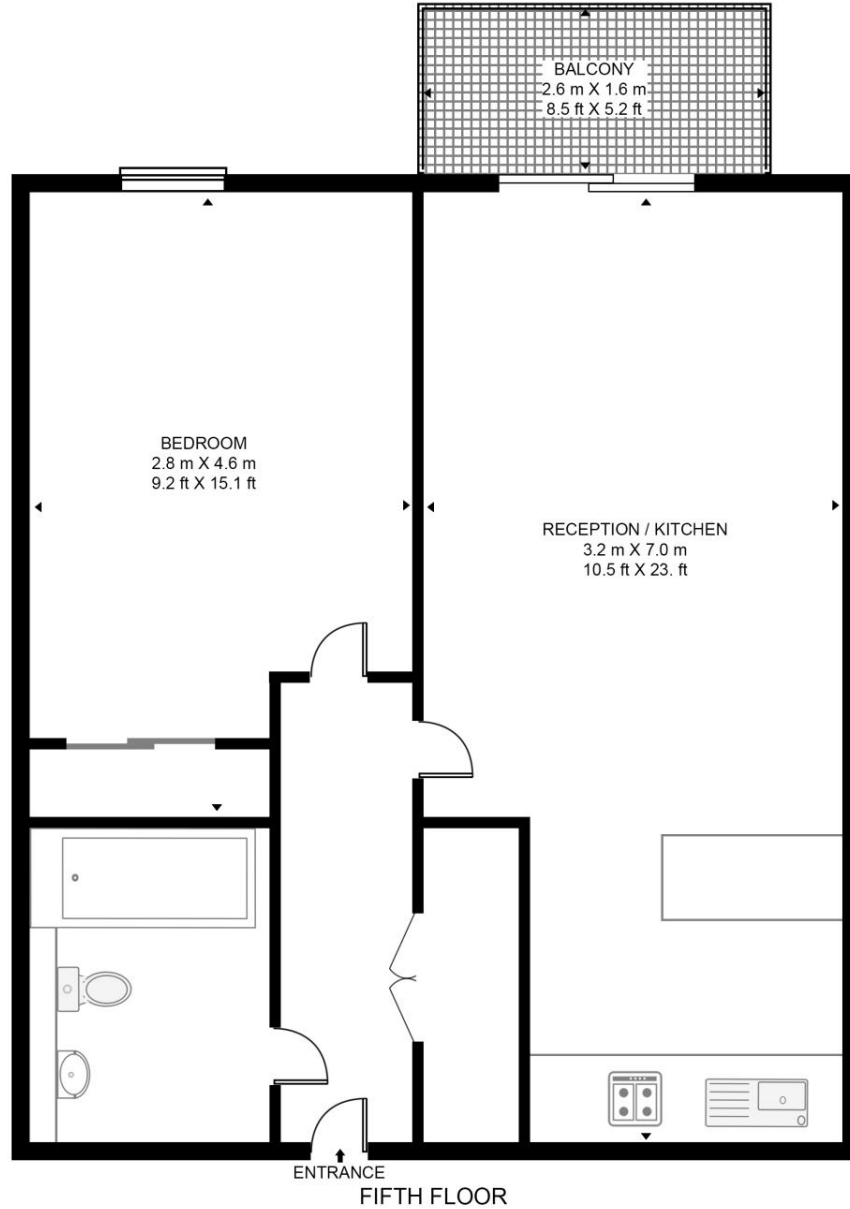
- - 1 Double bedroom
- - 1 Bathroom
- - Balcony
- - 5th Floor modern apartment
- - Close to mainline and DLR stations
- - Local amenities
- - Approx. 452 sq ft (42 sq m)
- - No onward chain
- - EPC: B

# Floorplan

452 sq ft | 42 sq m

## BAQUBA BUILDING

APPROXIMATE GROSS INTERNAL FLOOR AREA 452 SQ.FT (42 SQ.M)



**HDVA**

This floor plan has been defined by the RICS Code of Measurement. This floor plan and all others are for approximate representative purposes only and upon usage is agreed to as such by the client.

WWW: [hdvirtualart.com](http://hdvirtualart.com) | TEL: 0203.974.1567 | EMAIL: [info@hdvirtualart.com](mailto:info@hdvirtualart.com)

Greenwich  
22 College Approach,  
London SE10 9HY  
02088589986  
[greenwichlettings@eu.jll.com](mailto:greenwichlettings@eu.jll.com)

*Urban living, your way.*

[jll.co.uk/residential](http://jll.co.uk/residential)

© 2019 Jones Lang LaSalle IP, Inc. All rights reserved. All information contained herein is from sources deemed reliable; however, no representation or warranty is made to the accuracy thereof.

