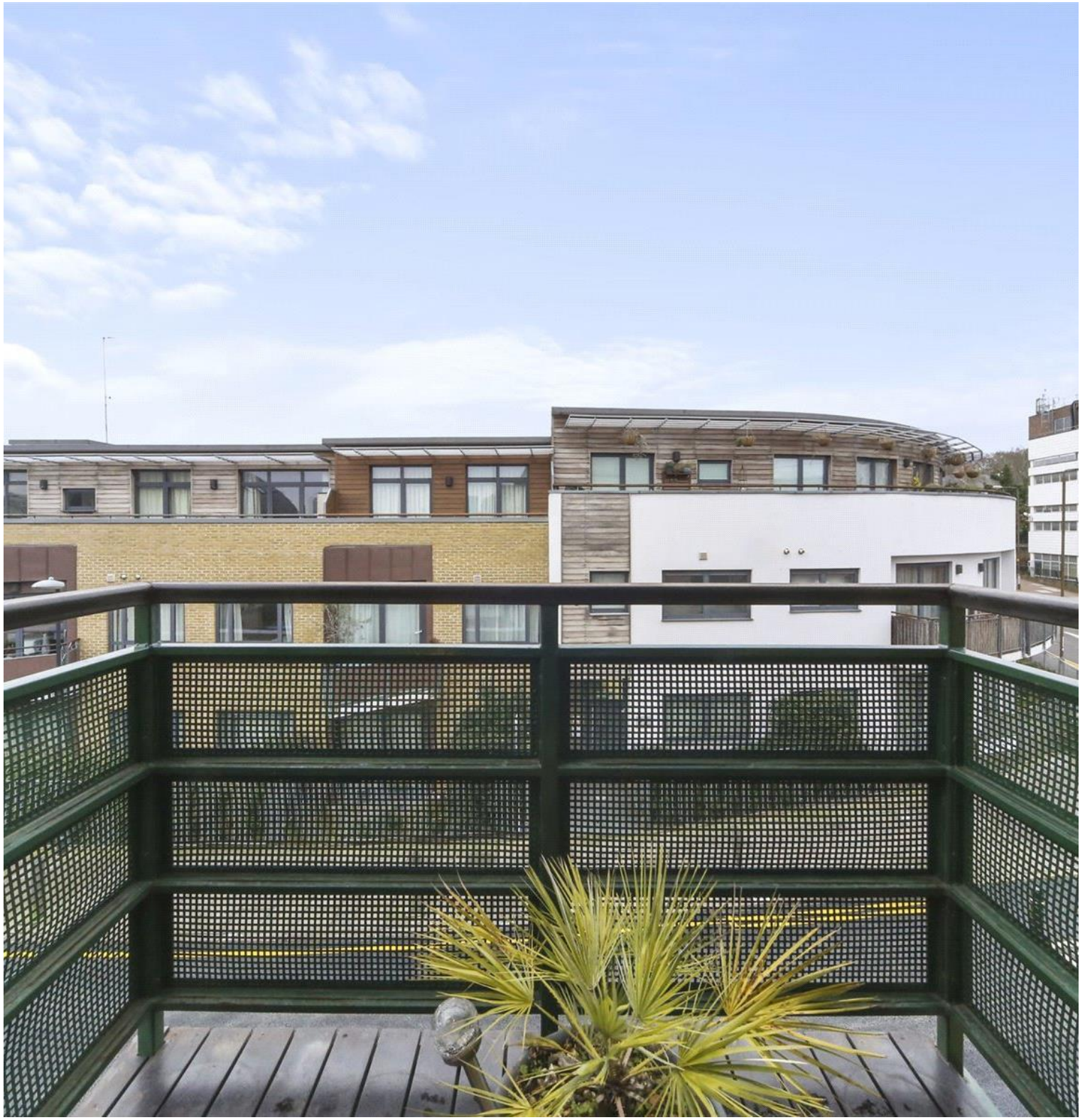




Woodland Crescent, London SE10

Guide price £425,000 Leasehold







Description

A fantastic contemporary split level one bedroom apartment of this desirable modern development in the heart of Greenwich with parking.

The property comprises master double bedroom, family bathroom with shower, wonderful spacious reception room with wood flooring and discreet fully fitted kitchen. The property further benefits from secure parking and is available with no onward chain.

Early viewings are highly recommended.

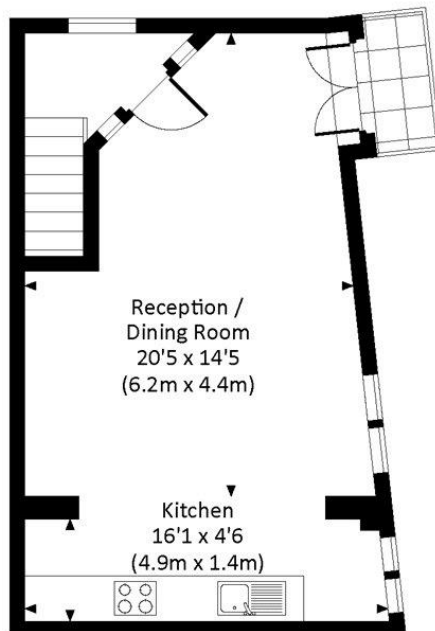
- - 1 Bedroom
- - 1 Bathroom
- - Split level apartment
- - Balcony
- - Secure parking
- - Approx. 674 sq ft (62.6 sq m)
- - Heart of Greenwich
- - Close to mainline and DLR stations
- - No onward chain
- - EPC: C

Floorplan

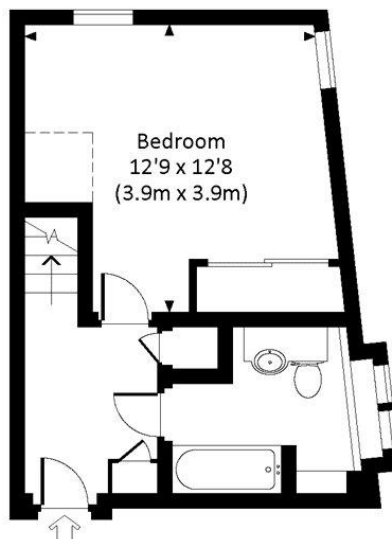
674 sq ft | 63 sq m

VISTA APARTMENTS, WOODLAND CRESCENT, SE10

Approx. gross internal area
674 Sq Ft. / 62.6 Sq M.



SECOND FLOOR



FIRST FLOOR



All measurements have been made in accordance with RICS Code of Measuring Practice which are approximate only and only for illustrative purposes. For the avoidance of doubt, Dowling Jones Design shall not be liable for any reliance on these measurements. © 2018 www.dowlingjones.com 020 7610 9933

Greenwich
22 College Approach,
London SE10 9HY
02088589986
lettingsgreenwich@eu.jll.com

Urban living, your way.

jll.co.uk/residential

© 2019 Jones Lang LaSalle IP, Inc. All rights reserved. All information contained herein is from sources deemed reliable; however, no representation or warranty is made to the accuracy thereof.

