



12 Dowells Street, London SE10

Guide price £650,000 Leasehold







Description

EWS1 Compliant - Forming part of this magnificent river facing development is this light and bright, two bedroom, duplex apartment with direct river views. The property is just a short walk away from the Cutty Sark DLR and Greenwich mainline station.

The accommodation is arranged over two floors and offers a large entrance hall, storage cupboard, downstairs cloakroom/wc, lounge which opens on to the modern fitted kitchen with integral appliances and stunning river views over to Canary Wharf, two double bedrooms, both with fitted wardrobes, master with ensuite shower room and a Juliette balcony and a separate family bathroom.

The property also benefits from a concierge service and onsite Waitrose.

The apartment is presented in neutral tones throughout so early viewings are highly recommended.

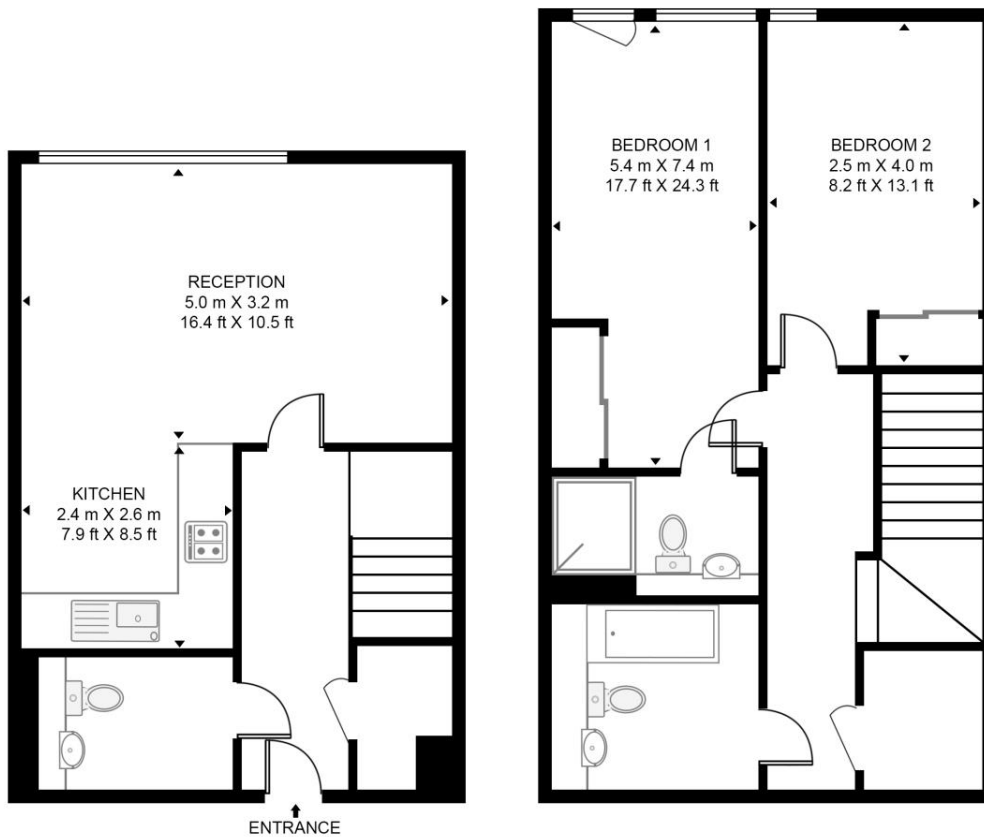
- - 2 Double bedrooms
- - 2 Bathrooms + WC
- - Juliette balcony
- - Stunning direct river views across to Canary Wharf
- - Split level duplex apartment
- - Approx. 856 sq ft (79.5 sq m)
- - Leasehold (990 years)
- - Walk to DLR and Greenwich mainline stations
- - Video entry - phone security
- - Bike storage in underground car park

Floorplan

856 sq ft | 80 sq m

BEACON POINT

APPROXIMATE GROSS INTERNAL FLOOR AREA 856 SQ.FT (79.5 SQ.M)



GROUND FLOOR

FIRST FLOOR

HDVA

This floor plan has been defined by the RICS Code of Measurement. This floor plan and all others are for approximate representative purposes only and upon usage is agreed to as such by the client.

WWW: hdvirtualart.com | TEL: 0203.974.1567 | EMAIL: info@hdvirtualart.com

Greenwich
22 College Approach,
London SE10 9HY
02088589986
lettingsgreenwich@eu.jll.com

Urban living, your way.

jll.co.uk/residential

© 2019 Jones Lang LaSalle IP, Inc. All rights reserved. All information contained herein is from sources deemed reliable; however, no representation or warranty is made to the accuracy thereof.

