



Bessemer Place, Greenwich, London SE10 0GQ



Bessemer Place, Greenwich, London, SE10

Leasehold (230 years remaining)

A light and spacious apartment located within the highly sought after riverside development of Bessemer Place benefiting from amazing uninterrupted, far reaching river views from a well portioned private balcony.

Key Features

- 1 Bedroom
- 1 Bathroom
- 14th Floor
- Tax Band: B
- Service Charge: £2,616 p/a
- Ground Rent: £250 p/a
- North Greenwich underground
- EPC: B

The accommodation comprises entrance hall with built in cupboard, good sized kitchen / reception room with access onto a private balcony. Double bedroom with built in wardrobes, also with access on to same private balcony and a separate family family.

Residents of Bessemer Place have access to various amenities, including 24-hour concierge service, secure underground parking, and landscaped communal gardens. Additionally, the development benefits from excellent transport links, with Greenwich station a short walk away, offering convenient access to central London and other parts of the city.

Presented in neutral tones throughout , early viewings are highly recommended.





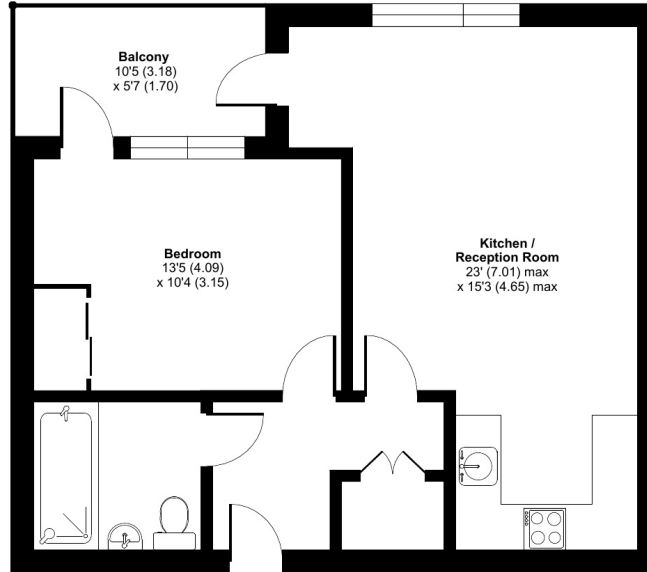




15 Bessemer Place, London, SE10

Approximate Internal Area = 544 sq ft / 50.5 sq m

For identification only - Not to scale



FOURTEENTH FLOOR



Floor plan produced in accordance with RICS Property Measurement Standards incorporating International Property Measurement Standards (IPMS2 Residential). © rlxhcom 2024. Produced for JLL Residential. REF: 1079886

22 College Approach, Greenwich, London,
SE10 9HY

Sales, Lettings & Property Management

Tel: 020 8858 9986

residential.jll.co.uk

