



City Walk, Perry Vale, Forest Hill, London, SE23 2AR



## City Walk, Perry Vale, London, SE23

Leasehold (982 years remaining)

***This is a trendy apartment on the first floor, in this highly desirable residential development located in the heart of Forest Hill.***

### Key Features

- 1 Bedroom
- Close to transport links
- Council Tax: B
- Service Charge: £1,489 p/a
- Ground Rent: £250 p/a
- Light and spacious
- No onward chain
- EPC: B

---

The accommodation comprises good sized hallway with built in double cupboard, a spacious lounge / kitchen with wood floors and integrated appliances, double bedroom and a modern family bathroom.

City Walk provides a range of amenities for residents to enjoy, including communal gardens and landscaped outdoor spaces.

Forest Hill is well-served by public transport, offering convenient links to central London and other parts of the city. In addition to the Overground station, there are also bus services that connect the area to nearby areas.

The property is offered to the market with no onward chain, early viewings are highly recommended.







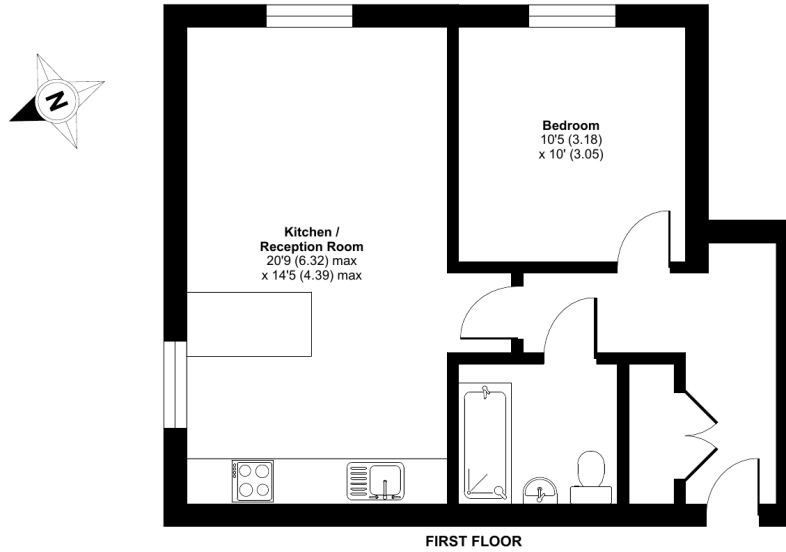




## Perry Vale, SE23

Approximate Internal Area = 508 sq ft / 47.2 sq m

For identification only - Not to scale



Floor plan produced in accordance with RICS Property Measurement Standards incorporating International Property Measurement Standards (IPMS2 Residential). © rlxhocom 2024. Produced for JLL Residential. REF: 1131318

22 College Approach, Greenwich, London, SE10 9HY

**Sales, Lettings & Property Management**

Tel: 020 8858 9986

[residential.jll.co.uk](https://residential.jll.co.uk)

