



Wyndham Apartments, 67 River Gardens Walk, Greenwich, SE10



Wyndham Apartments, River Gardens, SE10

leasehold

This superb south-facing apartment, on the banks of the River Thames is in Wyndham, the final phase of the prestigious River Gardens that was developed by renowned luxury hotel developer L+R, and is known for its exceptionally large rooms, plentiful amenities and luxurious sense of space.

Key Features

- Three Double Bedrooms
- Secure Underground Parking Space
- Swimming Pool, Gym & Tennis Court
- Close to Cutty Sark & Maze Hill
- 24-Hour Concierge Service
- No Upper Chain
- 1,167 Sq. Ft. (108.4 Sq. M.)
- Two Large Balconies
- Storage Cage in Car Park

Located on the 2nd Floor of this prestigious riverside development, one of the finest in East Greenwich, this property features exceptionally large, well-proportioned rooms with luxurious high-quality finishes. The spacious, sun-drenched open-plan kitchen and reception room opens onto a private balcony with direct views of the Greenwich Observatory, and partial views of the river and Canary Wharf skyscrapers.

The master bedroom is large and well-proportioned, boasting a built-in double wardrobe, an elegant en suite with a walk-in rainfall shower, and a private river-facing balcony.

Two additional double bedrooms share a third balcony. All rooms are adorned with floor-to-ceiling windows that bathe the space in natural light. The property also includes a stylish family bathroom and an entrance hall with two built-in cupboards. Secure underground parking and a generous underground storage unit are included in the sale. Decorated in chic neutral tones throughout, this stunning apartment is available chain-free and ready to move into.







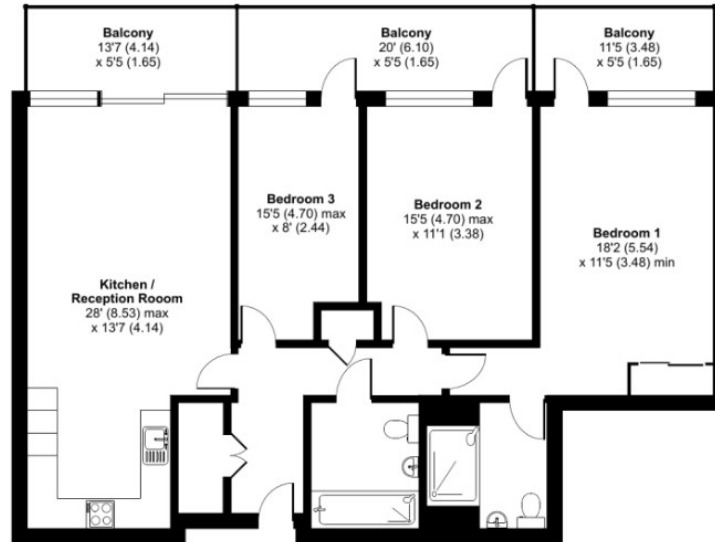


River Gardens Walk, London, SE10

Approximate Internal Area = 1167 sq ft / 108.4 sq m

Balcony = 244 sq ft / 22.7 sq m

For identification only - Not to scale



SECOND FLOOR



Floor plan produced in accordance with RICS Property Measurement Standards incorporating International Property Measurement Standards (IPMS2 Residential). © richcom 2024. Produced for JLL Residential. REF: 1115328