



Bond Court, Goodwood Road, London SE14 6FE



## **Bond House, Goodwood Road, London, SE14**

Leasehold (245 years remaining)

***Located on the 5th floor comes this stunning apartment offering light and spacious accommodation a benefits from 245 lease.***

### **Key Features**

- 2 Double bedrooms
- 2 Bathrooms
- Balcony
- Council Tax: C
- Service Charge: £1,200 pa
- Ground Rent: £400 p/a
- Light and spacious throughout
- EPC: B

---

The accommodation comprises large entrance hall with a double built in cupboard and a store cupboard, open plan kitchen / reception room with access directly onto a balcony overlooking New Cross, two double bedrooms, master with built in wardrobes and a en-suite shower room and a separate family bathroom.

Goodwood Road is situated within this superb location, 3 minutes from New Cross Gate Station with excellent transport links to the City and West End. This location also benefits from an array of local pubs, bars and shops on your doorstep together with a selection of beautiful parks and green walks.







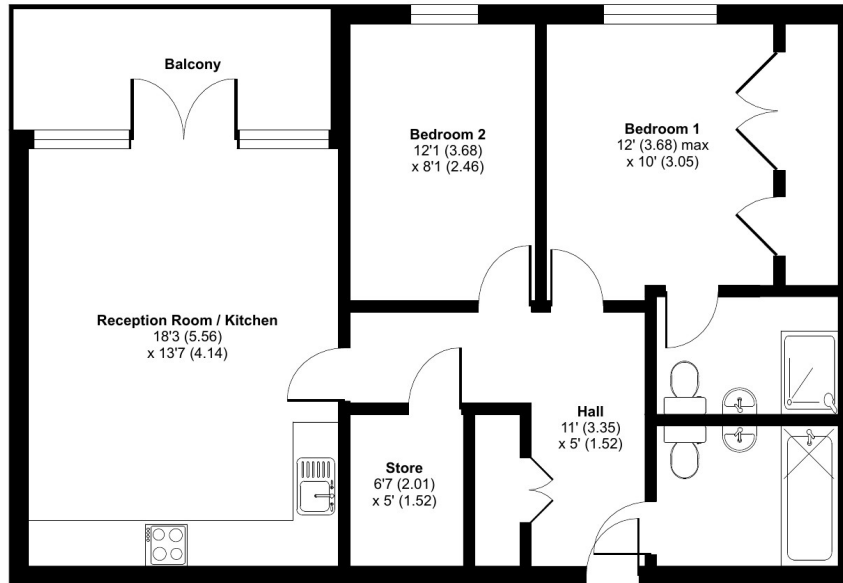


## Goodwood Road, SE14

Approximate Internal Area = 772 sq ft / 71.7 sq m

Balcony = 75 sq ft / 7 sq m

For identification only - Not to scale



Floor plan produced in accordance with RICS Property Measurement Standards incorporating International Property Measurement Standards (IPMS2 Residential). © rnhcom 2024. Produced for JLL Residential. REF: 1144826

22 College Approach, Greenwich, London, SE10 9HY

Sales, Lettings & Property Management

Tel: 020 8858 9986

[residential.jll.co.uk](https://residential.jll.co.uk)

