



Henry Hudson, 41 Banning Street, Greenwich, London SE10 0FE



## Henry Hudson Apartments, London, SE10

Leasehold (986 years remaining)

***Immaculate riverside apartment located within the highly sought after River Gardens development, with concierge and access to a modern gym, swimming pool and tennis court.***

### Key Features

- 1 Bedroom
- 1 Bathroom
- Balcony
- Council Tax: B
- Service Charge: £4,500 p/a
- Ground Rent: £300 p/a
- Close to mainline and DLR
- EPC: B

---

The accommodation offers a bright lounge with a built in cupboard and opens into a modern fitted kitchen and a large balcony with uninterrupted river views. Double bedroom with built in wardrobes and access onto the balcony and a separate contemporary family bathroom.

The development was designed with high energy performance standards; this, along with the south aspect of the flat makes it especially energy efficient during winter months.

This property is located on the banks of the River Thames close to the centre of Greenwich and its transport links. We believe this property would make an ideal first purchase, pied a terre or buy to let investment.

Early viewings of this chain free property are highly recommended.





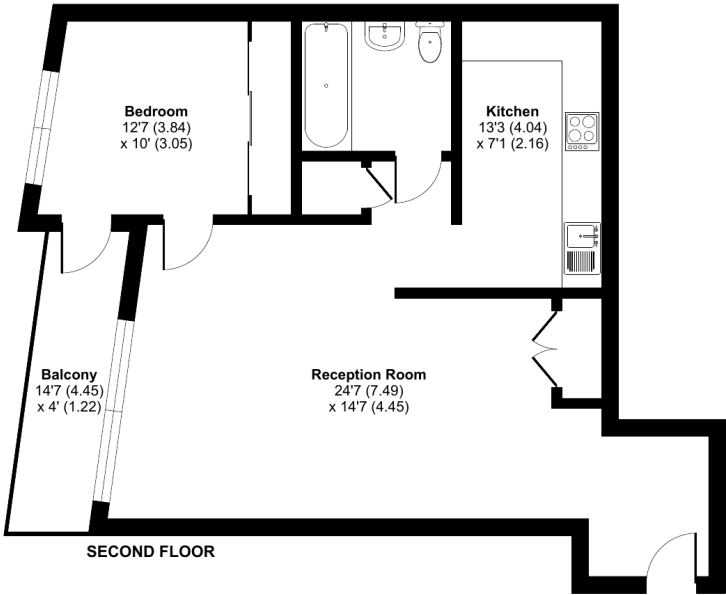




# Banning Street, London, SE10

Approximate Area = 663 sq ft / 61.5 sq m

For identification only - Not to scale



Floor plan produced in accordance with RICS Property Measurement Standards incorporating International Property Measurement Standards (IPMS2 Residential). © nlschem 2023. Produced for JLL Residential. REF: 1062431

22 College Approach, Greenwich, London, SE10 9HY

Sales, Lettings & Property Management

Tel: 020 8858 9986

[residential.jll.co.uk](http://residential.jll.co.uk)

