



Sloane Gardens, London SW1W

Price £775 per week - Furnished





Description

A stunning third floor apartment (with lift) in this red brick period building within a few minutes walk of Sloane Square. The property consists of master bedroom with en suite bathroom, second double bedroom with en suite shower room, guest cloakroom, reception room and a fully fitted kitchen. This modern and contemporary flat further benefits from elegant furnishings and use of communal gardens by application. Sloane Gardens is located on the east corner of Sloane Square and it is within walking distance of the many amenities and transport links of Chelsea and Knightsbridge.

As well as paying the rent, you may also be required to make permitted payments. Please visit jll.co.uk/fees for details of fees which may be payable when renting a property. If your tenancy does not qualify as an AST, additional fees may apply.

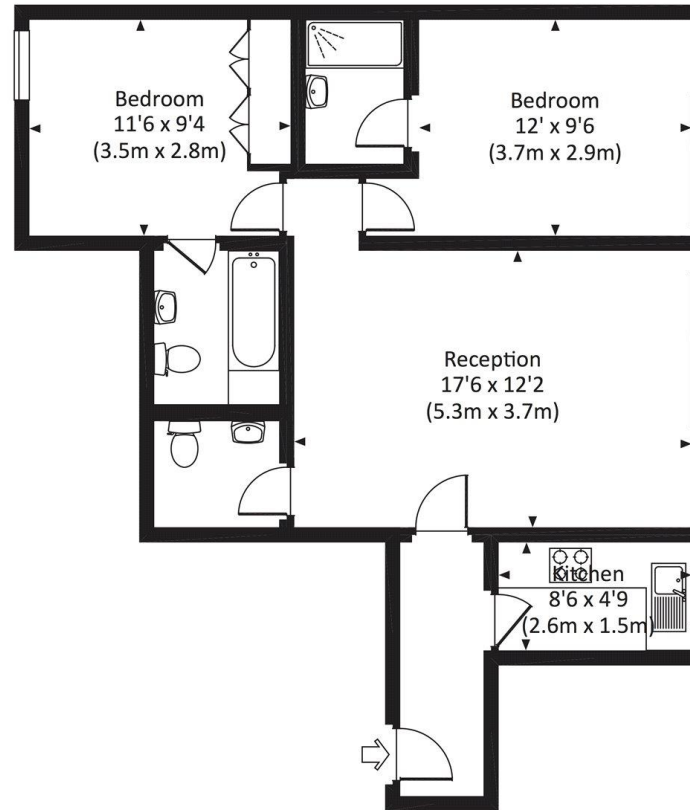


- 2 Double bedrooms
- 1 Bathroom (en suite)
- 1 Shower room (en suite)
- Guest cloakroom
- Reception room
- Fully fitted kitchen
- Third floor
- Lift
- Communal gardens by application
- Approx. 673 sq ft (62 sq m)

Floorplan

673 sq ft | 63 sq m

Approx. gross internal area
673 Sq Ft. / 62.5 Sq M.



THIRD FLOOR

dpd All measurements have been made in accordance with RICS Code of Measuring Practice which are approximate only and only for illustrative purposes. For the avoidance of doubt, Dowling Jones Design shall not be liable for any reliance on these measurements. © 2017 www.dowlingjones.com 020 7610 9933

Chelsea
2 Cale Street,
London SW3 3QU
020 7399 5010
chelsealettings@eu.jll.com

Urban living, your way.

jll.co.uk/residential

© 2019 Jones Lang LaSalle IP, Inc. All rights reserved. All information contained herein is from sources deemed reliable; however, no representation or warranty is made to the accuracy thereof.

