



## Windsor Court, London SW3

Price £450 per week - Unfurnished





# Description

A bright and spacious first floor flat (with lift) in this well located purpose built block in the heart of Chelsea. The property consists of one double bedroom, one shower room, reception room and a fully fitted kitchen. The flat is conveniently located for the many shopping and transport amenities of the King's Road, Sloane Avenue and Brompton Cross.

Being a Cadogan Estate tenant offers a number of benefits including no administration, referencing or inventory fees, a dedicated 24 hour emergency service, access to beautiful communal gardens and tennis courts and access to the Cadogan Concierge.

As well as paying the rent, you may also be required to make permitted payments. Please visit [jll.co.uk/fees](http://jll.co.uk/fees) for details of fees which may be payable when renting a property. If your tenancy does not qualify as an AST, additional fees may apply.

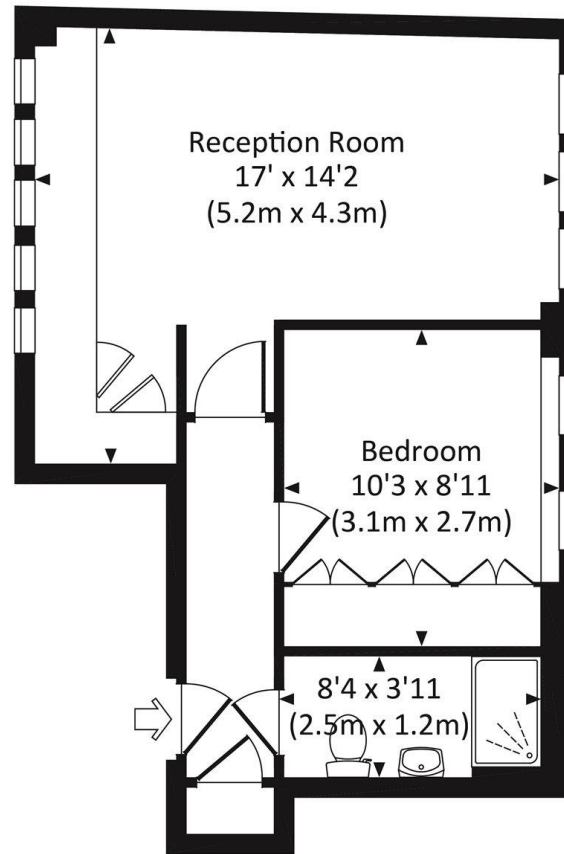
- 1 Double bedroom
- 1 Shower room
- Reception room
- Fully fitted kitchen
- First floor
- Lift
- Approx. 365 sq ft (33 sq m)
- Unfurnished
- EPC: C



# Floorplan

365 sq ft | 34 sq m

Approx. gross internal area  
365 Sq Ft. / 33.9 Sq M.



## FIRST FLOOR

dp All measurements have been made in accordance with RICS Code of Measuring Practice which are approximate only and only for illustrative purposes. For the avoidance of doubt, Dowling Jones Design shall not be liable for any reliance on these measurements. © 2017 www.dowlingjones.com 020 7610 9933

Chelsea  
2 Cale Street,  
London SW3 3QU  
020 7399 5010  
chelsealettings@eu.jll.com

*Urban living, your way.*

[jll.co.uk/residential](http://jll.co.uk/residential)

© 2019 Jones Lang LaSalle IP, Inc. All rights reserved. All information contained herein is from sources deemed reliable; however, no representation or warranty is made to the accuracy thereof.

