



Sloane Gardens, London SW1W

Price £1,300 per week - Unfurnished





Description

A beautifully presented lower ground floor apartment, situated in a charming period building in Sloane Gardens. The property comprises master bedroom with en suite shower room and walk in wardrobe, two further double bedrooms, one shower room, guest cloakroom, reception room, open plan kitchen and a patio area. Sloane Gardens is located just moments from Sloane Square and the Kings Road, close to the array of shops, restaurants and transport links that the area has to offer.

Being a Cadogan Estate tenant offers a number of benefits including no administration, referencing or inventory fees, a dedicated 24 hour emergency service, access to the Cadogan Concierge and access to beautiful communal gardens and tennis courts by application.

As well as paying the rent, you may also be required to make permitted payments. Please visit jll.co.uk/fees for details of fees which may be payable when renting a property. If your tenancy does not qualify as an AST, additional fees may apply.

- Master bedroom with walk in wardrobe and en suite shower room
- Two further bedrooms
- One further shower room
- Reception room
- Open plan kitchen
- Guest cloakroom
- Patio area
- Lower ground floor
- Approx. 1326 sq ft (123 sq m)
- Unfurnished

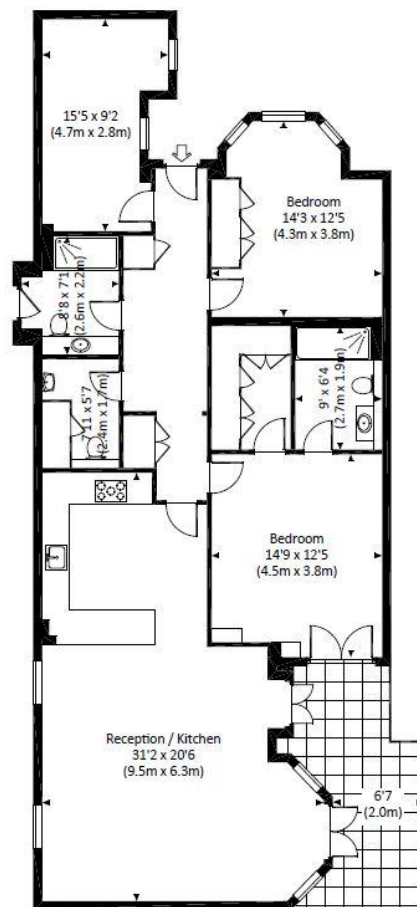


Floorplan

1,326 sq ft | 123 sq m

SLOANE GARDENS, SW1

Approx. gross internal area
1326 Sq Ft. / 123.2 Sq M.



LOWER GROUND FLOOR

All measurements are approximate and for guidance and illustrative purposes only.
Photography and Floor Plans by www.dowlingpro.com - +44 7793 974 209

Chelsea
2 Cale Street,
London SW3 3QU
020 7399 5010
chelsealettings@eu.jll.com

Urban living, your way.

jll.co.uk/residential

© 2019 Jones Lang LaSalle IP, Inc. All rights reserved. All information contained herein is from sources deemed reliable; however, no representation or warranty is made to the accuracy thereof.

