



Jubilee Place, London SW3

Price £460 per week - Furnished





Description

A very well presented third floor flat (with lift) in this much sought after block in the heart of Chelsea. The property consists of one double bedroom, one shower room, reception room, separate kitchen and a terrace area. Windsor Court is located just minutes' walk from Chelsea Green and all the shops, restaurants and transport facilities of the King's Road.

As well as paying the rent, you may also be required to make permitted payments. Please visit jll.co.uk/fees for details of fees which may be payable when renting a property. If your tenancy does not qualify as an AST, additional fees may apply.

- One double bedroom
- One shower room
- Reception room
- Separate kitchen
- Terrace
- Third floor
- Lift
- Approx. 457 sq ft (42 sq m)
- Furnished
- EPC: D



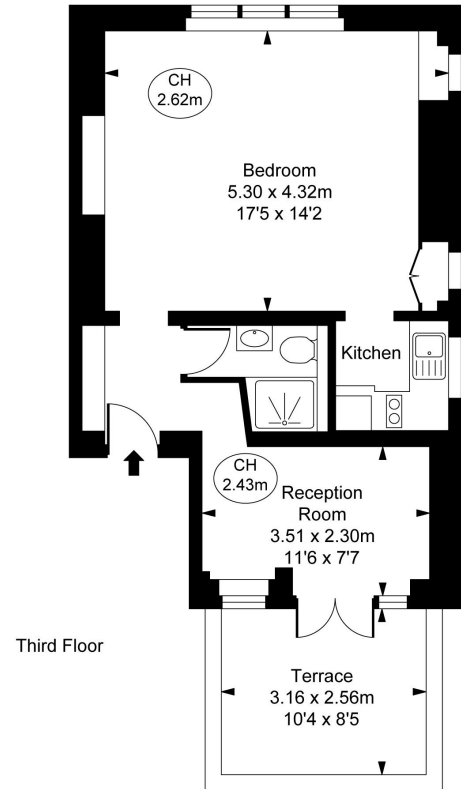
Floorplan

457 sq ft | 43 sq m

Windsor Court,
Jubilee Place, SW3
Approximate Gross Internal Area
42.48 sq m / 457 sq ft



(CH = Ceiling Heights)



This plan is not to scale. It is for guidance and not for valuation purposes.
All measurements and areas are approximate only, and have been prepared in accordance with the current edition of the RICS Code of Measuring Practice.
© Fulham Performance

Chelsea
2 Cale Street,
London SW3 3QU
020 7399 5010
chelsealettings@eu.jll.com

Urban living, your way.

jll.co.uk/residential

© 2019 Jones Lang LaSalle IP, Inc. All rights reserved. All information contained herein is from sources deemed reliable; however, no representation or warranty is made to the accuracy thereof.

