



Sloane Gardens, London SW1W

Price £365 per week - Furnished





Description

A wonderful raised ground floor studio apartment in this red brick period building and moments from Sloane Square. The property consists of reception/bedroom, shower room and a fully fitted kitchen. Sloane Gardens is located on the east corner of Sloane Square and it is within walking distance of the many amenities and transport links of Chelsea and Knightsbridge.

As well as paying the rent, you may also be required to make permitted payments. Please visit jll.co.uk/fees for details of fees which may be payable when renting a property. If your tenancy does not qualify as an AST, additional fees may apply.

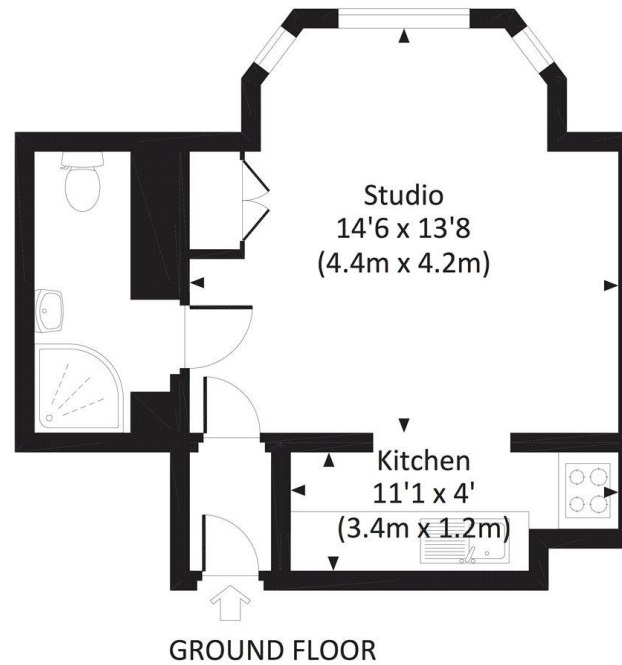
- Reception / bedroom
- Shower room
- Fully fitted kitchen
- Resident caretaker
- Use of communal gardens
- Approx. 290 sq ft (26 sq m)
- Furnished
- EPC: B



Floorplan

290 sq ft | 27 sq m

Approx. gross internal area
289 Sq Ft. / 26.8 Sq M.



dp All measurements have been made in accordance with RICS Code of Measuring Practice which are approximate only and only for illustrative purposes. For the avoidance of doubt, Dowling Jones Design shall not be liable for any reliance on these measurements. © 2017 www.dowlingjones.com 020 7610 9933

Chelsea
2 Cale Street,
London SW3 3QU
+4420 7399 5010
chelsealettings@eu.jll.com

Urban living, your way.

jll.co.uk/residential

© 2019 Jones Lang LaSalle IP, Inc. All rights reserved. All information contained herein is from sources deemed reliable; however, no representation or warranty is made to the accuracy thereof.

