



Sloane Court East

CHELSEA SW3



A very well presented raised ground floor flat (599 sq ft / 56 sq m) in this well run, purpose built block. The flat offers well laid out accommodation including a large double bedroom, reception room and bathroom.

Sloane Court East is conveniently located to the south of Sloane Square, west of the vibrant Pimlico Road and a moments' walk to the Chelsea Barracks development, with its public gardens, making this an ideal pied a terre or investment in a first class position.

- Double bedroom
- Reception room
- Bathroom
- Kitchen
- Communal heating and hot water
- Caretaker (resident in 3 Sloane Court East)
- EPC: C

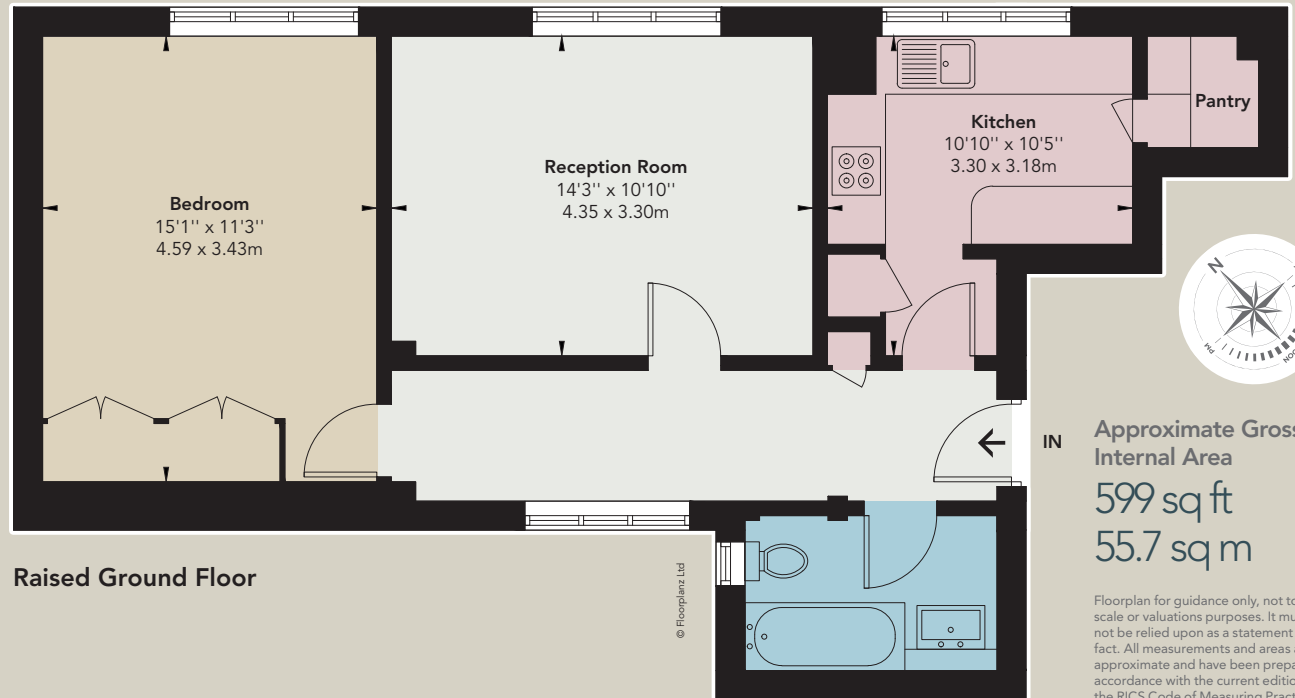
Guide Price: £875,000

Tenure: Leasehold, 994 years remaining

Service Charge: Approximately £3,972 for the current year

Ground Rent: Peppercorn

Local Authority: The Royal Borough of Kensington & Chelsea



Floorplan for guidance only, not to scale or valuations purposes. It must not be relied upon as a statement of fact. All measurements and areas are approximate and have been prepared in accordance with the current edition of the RICS Code of Measuring Practice.

THE BROCHURE ALEX WILKINSHIP

These particulars are for general information only and do not constitute any part of an offer or contract. All statements contained therein are made without responsibility on the part of the vendors or lessors and are not to be relied upon as statement or representation of fact. Intending purchasers or lessees must satisfy themselves, by inspection, or otherwise, as to the correctness of each of the statements or dimensions contained in these particulars. This floorplan is for guidance only and not for valuation purposes. 29/09/21 JLL-210928-02GG

JLL Knightsbridge

174 Brompton Road, London SW3 1HP

020 7306 1610

JLL Chelsea

2 Cale Street, London SW3 3QU

020 7399 5010

jll.co.uk/primecollection

