



# Cheltenham Terrace, London SW3

Price £500 per week - Furnished







## Description

A well presented first floor studio flat (with lift and porter) in this vibrant area in the heart of Chelsea. The property consists of a spacious reception/bedroom with fold down bed, bathroom and a fully fitted kitchen. Further benefits include wooden floors and a wonderful terrace. Whitelands House is ideally located close to Sloane Square tube and the many shops of the Kings Road.

Rent is payable on a monthly basis and you may be required to pay more than a month's rent in advance, depending on your circumstances. You will be required to pay a 1 week holding deposit following a successful offer. Utility bills, council tax, telephone line and broadband are not included in the rent. As well as paying the rent, you may also be required to make some additional permitted payments. If your tenancy does not qualify as an AST, additional fees may apply. Please visit [jll.co.uk/fees](http://jll.co.uk/fees) for details of fees which may be payable when renting a property.

- Studio
- Reception room
- Kitchen
- Bathroom
- First floor
- Lift
- Porter
- Approx. 451 sq ft (42 sq m)
- EPC: TBC
- Council tax: Band D

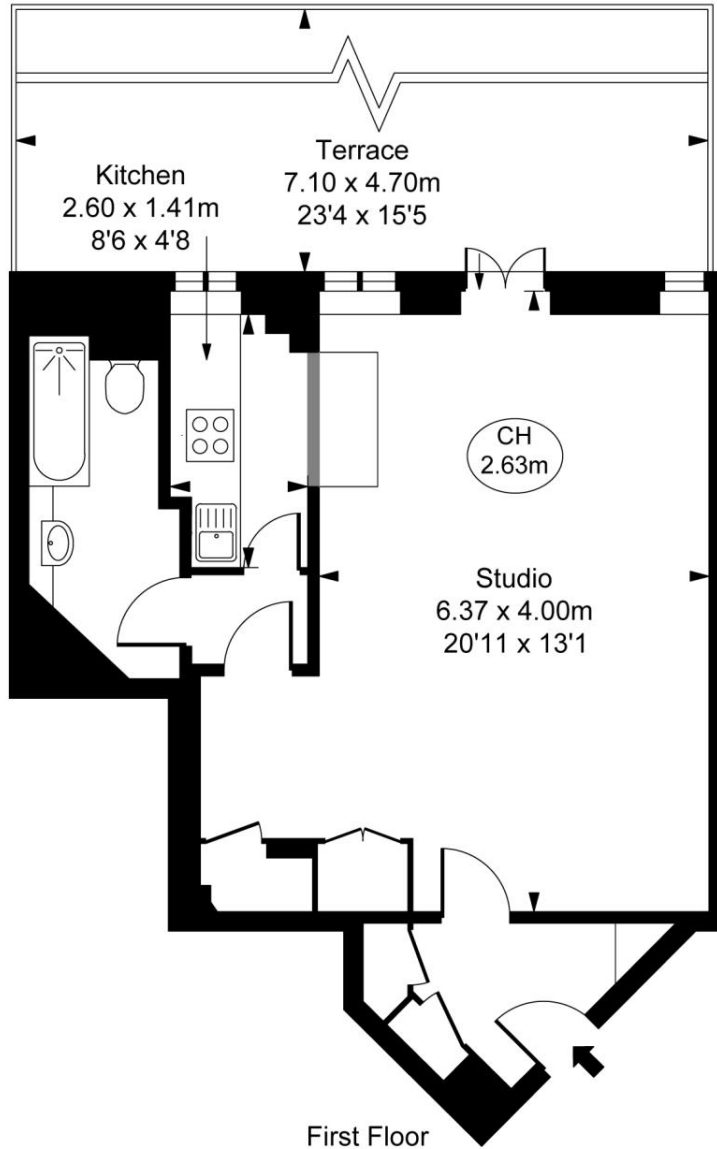
# Floorplan

451 sq ft | 42 sq m

## Whitelands House, Cheltenham Terrace, SW3

Approximate Gross Internal Area  
41.86 sq m / 451 sq ft

( CH = Ceiling Heights )



First Floor

This plan is not to scale. It is for guidance and not for valuation purposes.  
All measurements and areas are approximate only, and have been prepared in accordance with the current edition of the RICS Code of Measuring Practice.  
© Fulham Performance

Chelsea  
2 Cale Street,  
London SW3 3QU  
+4420 7399 5010  
saleschelsea@jll.com

*Urban living, your way.*

[jll.co.uk/residential](http://jll.co.uk/residential)

© 2019 Jones Lang LaSalle IP, Inc. All rights reserved. All information contained herein is from sources deemed reliable; however, no representation or warranty is made to the accuracy thereof.

