

# Windsor Court

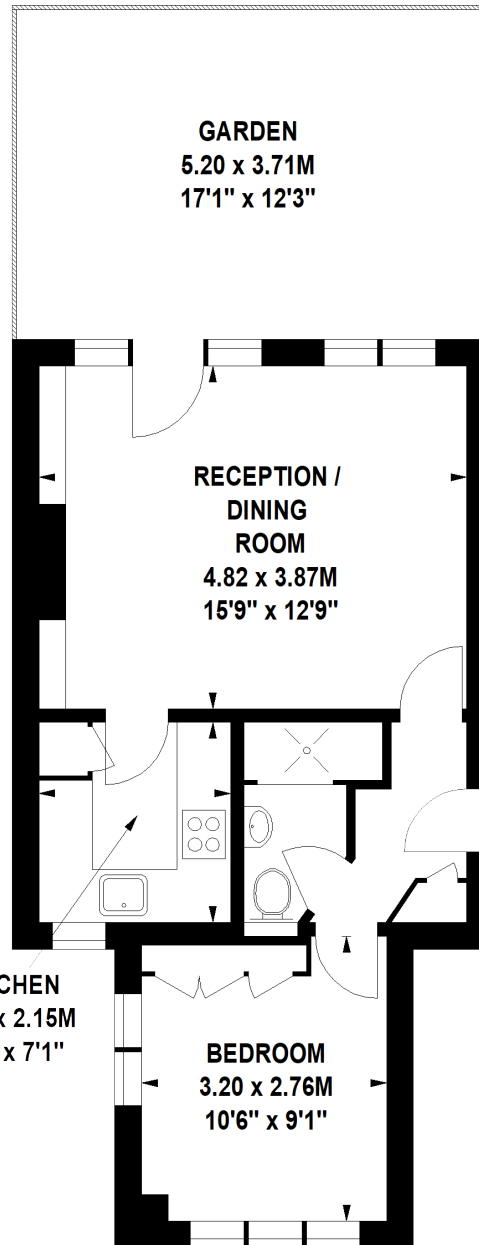
JUBILEE PLACE SW3

---





Gross Internal Area (Approx.)  
40 sq m (431 sq ft)



Ground Floor



This charming ground-floor apartment has its own delightful private garden, located next to 'The Green' in the heart of Chelsea. The garden has just been sympathetically landscaped.

The property has a wonderful reception room, leading out onto the private garden, a fully equipped separate kitchen, a double bedroom, and a bathroom, all presented in good condition. It would make a perfect London pied-à-terre or a fabulous first home.

Windsor Court is a small block of flats situated at the northern end of Jubilee Place. It shares a caretaker with its sister building opposite Chelsea Green and has a wonderful village-like feel. It also has excellent local amenities, including shops and restaurants.

JLL Knightsbridge  
174 Brompton Road,  
London SW3 1HP  
020 7306 1610



These particulars are for general information only and do not constitute any part of an offer or contract. All statements contained therein are made without responsibility on the part of the vendors or lessors and are not to be relied upon as statement or representation of fact. Intending purchasers or lessees must satisfy themselves, by inspection, or otherwise, as to the correctness of each of the statements or dimensions contained in these particulars.

## ACCOMMODATION

One double bedroom | Bathroom | Reception room  
Separate kitchen | Private garden | Approx. 431 sq ft (40 sq m)  
EPC: C

## TERMS

Guide price: £650,000  
Tenure: Leasehold (95 years remaining)  
Service charge: £4,744 plus a contribution to the reserve fund  
Local authority: Kensington and Chelsea  
Council tax: Band E