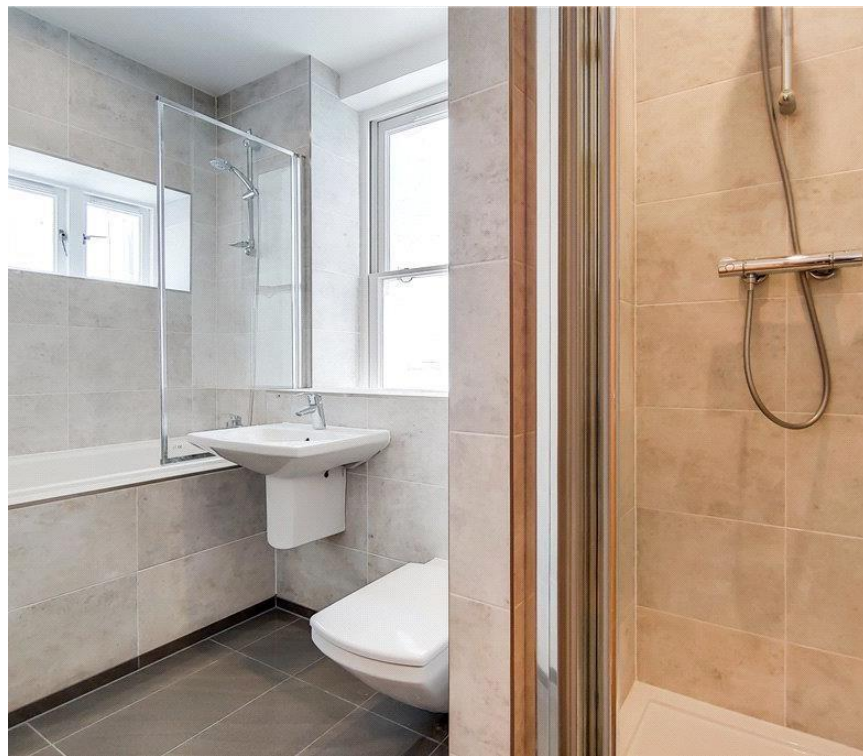
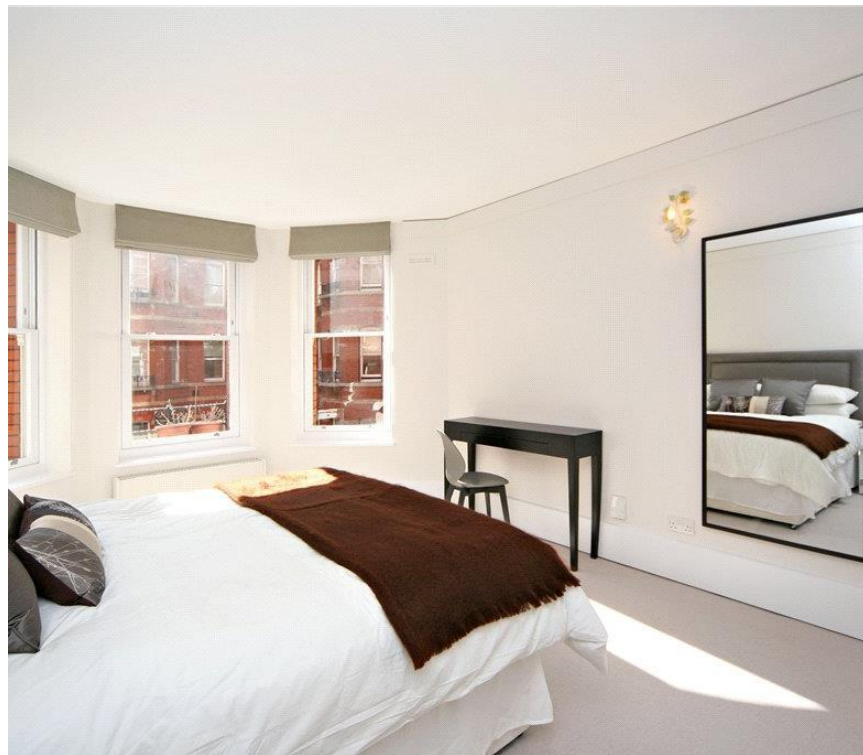




## Artillery Mansions, London SW1H

Price £690 per week - Furnished







# Description

A spacious, newly refurbished second floor flat (with lift) in this sought after building in Victoria. The property consists of two double bedrooms, two bathrooms, a large reception room and a fully fitted kitchen. The flat also benefits from portage and parking by separate negotiation. Artillery Mansions is a smart building in the heart of Victoria, close to the amenities of Victoria and with easy access to the City.

As well as paying the rent, you may also be required to make permitted payments. Please visit [jll.co.uk/fees](http://jll.co.uk/fees) for details of fees which may be payable when renting a property. If your tenancy does not qualify as an AST, additional fees may apply.

- 2 Double bedrooms
- 2 Bathrooms
- Reception room
- Fully fitted kitchen
- Second floor
- Lift
- Porter
- Parking by negotiation
- Approx. 1,086 sq ft (100 sq m)
- Furnished



# Floorplan

1,086 sq ft | 101 sq m

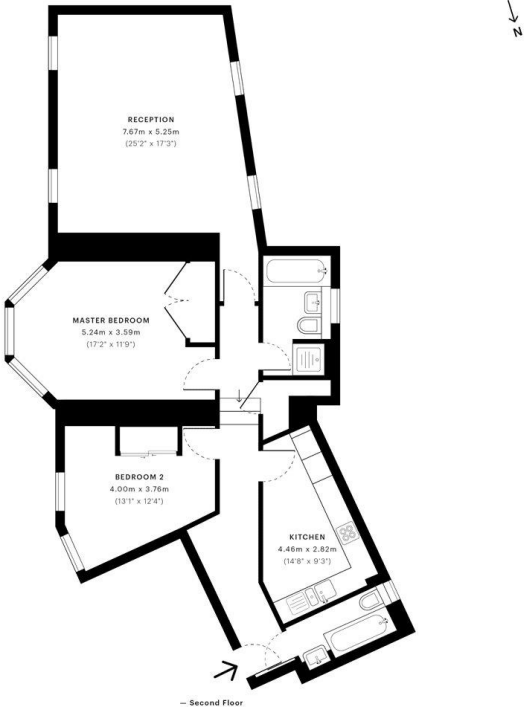


Artillery Mansions, SW1H

CAPTURE DATE  
03/07/2019

LASER SCAN POINTS  
29,693,172

GROSS INTERNAL AREA  
99.8 Sqm / 1073.8 Sqft



GROSS INTERNAL AREA  
The footprint of the property  
99.8 Sqm / 1073.8 Sqft

NET AREA (INTERNAL)  
Excludes walls and external features  
91.2 Sqm / 981.3 Sqft

EXTERNAL STRUCTURAL FEATURES  
Balconies, terraces, verandas etc.  
0.0 Sqm / 0.0 Sqft

RESTRICTED HEAD HEIGHT  
Limited use area under 1.5m  
0.0 Sqm / 0.0 Sqft



Spec floor plans are produced in accordance with the Royal Institution of Chartered Surveyors' Property Measurement Standards. Plots and gardens are illustrative only and are excluded from all area calculations. Due to rounding, numbers may not add up precisely.



IPMS 3B RESIDENTIAL  
102.1 Sqm / 1098.8 Sqft

IPMS 3C RESIDENTIAL  
93.5 Sqm / 1006.1 Sqft

SPEC ID:  
5d1b0ee773101e0a1733c807

Westminster  
31 Palmer Street,  
Westminster SW1H 0NP  
020 7306 1630  
westminster@eu.jll.com

*Urban living, your way.*

[jll.co.uk/residential](http://jll.co.uk/residential)

© 2019 Jones Lang LaSalle IP, Inc. All rights reserved. All information contained herein is from sources deemed reliable; however, no representation or warranty is made to the accuracy thereof.

